

B) Quick Start Guide for CameraLink

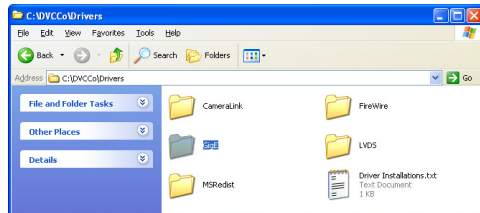
Recommendation: Print out and follow the detailed step-by-step instructions for installing the CameraLink Drivers.

****CameraLinkInstallation.pdf**

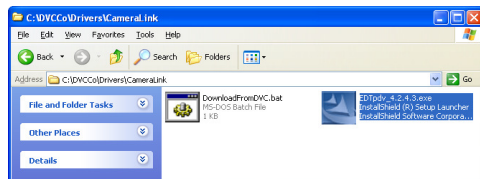
1) Install the CameraLink drivers for your interface card.

Locate - CameraLink Drivers:

Open - C:\DVCCo\Drivers



Locate and open this folder on your hard drive —
C:\DVCCo\Drivers\CameraLink



Run the EDTPdv_4.2.4.3.exe

2) Installing the CameraLink interface board

CameraLink interface board



a) Open the computer, and using the best anti-static practices, install the CameraLink PCI or PCIe interface card into the host computer.

b) Power on the computer and launch Windows. The "Found New Hardware" driver installation wizard will appear. Please take the default options to install the drivers automatically.

****Documents are located at C:\DVCCo\Docs**

3) Installing and connecting the camera

a) Mount the camera in the desired location, such as a microscope or optical platform.

b) Connect the 9-pin power supply connector to the power connector on the camera and secure it with the thumbscrews until finger-tight.

c) Using the interface cable, connect the camera to the CameraLink connector and to the host PC. Ensure the cable is secure at both ends.



d) Connect the power supply line cord to the wall outlet and switch on the power supply.

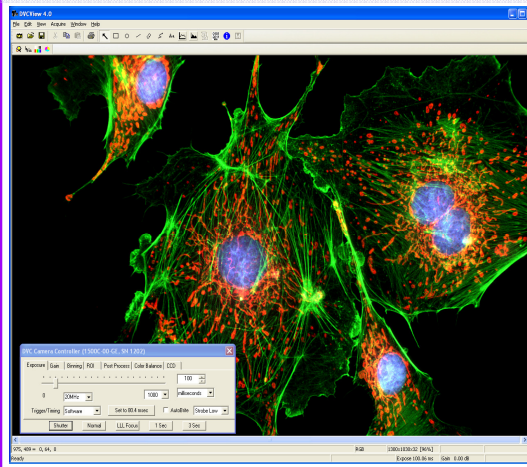
4) Launch the imaging software

Run DVCView

Double-click the icon on the desktop



5) Preview screen appears with live image



Company

www.dvcco.com

Solutions for Scientific Imaging

4120 Freidrich Lane, Suite M-500, Austin, Texas 78744 Phone: 512-301-9564

Thank you for ordering a DVC Camera System!

Equipment Supplied:

The following is a list of equipment that is typically included as part of a camera system. The actual items delivered depend on your order configuration.

- DVC camera
- CameraLink board -OR- Gigabit Ethernet board



- CameraLink cable -OR- Gigabit Ethernet cable



- Regulated power supply



- Line cord with suitable plug



- Wrench for adjusting lens adapter



- Combination lens cap and IR filter removal tool



- DVC software CD



Your DVC camera was thoroughly tested and carefully packed at the factory. Once the camera shipment is accepted for delivery, the carrier assumes full responsibility for its safe arrival. Should you receive your shipment with any damage—concealed or apparent—please contact the carrier at once. The carrier will instruct you on how to initiate a damage claim. If a visual inspection reveals damage upon receipt, it must be noted on the freight bill or express receipt and the notation signed by the carrier's agent. Failure to do so can result in the carrier refusing to honor the claim. To return your camera to DVC for service, you must first contact the DVC Customer Service Department in the United States at 512-301-9564 (opt 6) and request a Return Material Authorization (RMA).

Returns will not be accepted without an RMA.

Camera Software

Software Version Selection Table

DVC_Install_4.5.28	DVC_Install_4.3.26	DVC_Install_4.0.25
--------------------	--------------------	--------------------

	for developers	end user apps		OS
API	x32 apps	x32 apps	x32 apps	XP VISTA Win7
	x64 apps	x64 apps	x64 apps	

Camera Software Installation

- From the CD browse to the install sub-folder that matches your OS and run the DVC_API_Setup_*.exe file.
- From: <http://www.dvcco.com/products/software/downloads/> select the correct software.

(Please reference above table)

Special Note for Windows 7 Users

Important: Prior to the installation of the camera drivers please perform the steps explained in the document entitled: ****Win7 trouble-shooting. PDF**

Two Quick Start Guides are included in this document.
 A) For GigE Systems
 B) For CameraLink Systems
 These guides are intended to help users get started on the installation process. We recommend printing out and following the detailed step-by-step instructions indicated.

A) Quick Start Guide for GigE

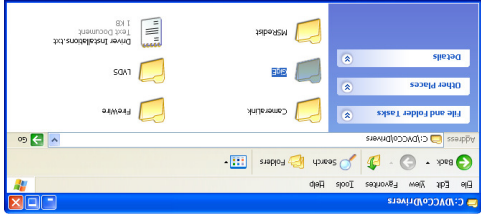
Recommendation: Print out and follow the detailed step-by-step instructions for installing the GigE Drivers.

**GigE Camera Installation.pdf

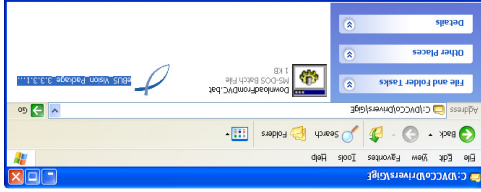
1) Install the GigE drivers for your interface card.

Locate - GigE Drivers

Open - C:\DVCCo\Drivers



Locate and open this folder on your hard drive — C:\DVCCo\Drivers\GigE



Run the eBus_Vision_Package_3.3.3.1743.exe

GigE interface board



2) Installing the GigE interface board

a) Open the computer, and using the best anti-static practices, install the GigE PCI or PCIe interface card into the host computer.

b) Power on the computer and launch Windows. The "Found New Hardware" driver installation wizard will appear. Please take the default options to install the Intel Manufacturers drivers automatically.

c) Load the eBus drivers — run the Driver Installation Tool: Go to Start\All Programs\Pleora Technologies\InclueBus Vision Package\Tools\Driver Installation Tool

**Documents are located at C:\DVCCo\Docs

3) Installing and connecting the camera

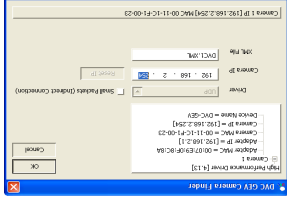
a) Mount the camera in the desired location, such as your microscope or optical imaging platform.
 b) Connect the 9-pin power supply connector to the power connector on the camera and secure it with the thumbscrews until finger-tight.

c) Using the interface cable, connect the camera to the GigE connector and to the host PC. Ensure the cable is secure at both ends.



d) Connect the power supply line cord to the wall outlet. Switch on the power supply.

IMPORTANT: Before using the camera, open the "Start\All Programs\DVCCo\GigE Camera Finder". This step establishes the camera's IP address and saves the configuration settings and is only required when connecting to a camera the first time.



e) Click OK to save the setting and close

4) Launch the imaging software

Double-click the icon on the desktop



5) Preview screen appears with live image

