

WPMQ10M-355 - December 05, 2019

Item # WPMQ10M-355 was discontinued on December 05, 2019. For informational purposes, this is a copy of the website content at that time and is valid only for the stated product.

MOUNTED MULTI-ORDER WAVE PLATES

- ▶ Quarter- and Half-Wave Plates Available
- ▶ AR Coating at Discrete Wavelengths from 266 nm to 1550 nm
- ▶ Available in Ø1/2" and Ø1" Versions



WPMQ05M-633



WPMQ10M-532



WPMH05M-780



Wave Plate
 Mounted in RSP1X15
 Indexed Rotation Mount
 (See Link Below)

OVERVIEW

Features

- High Energy Design
- Center Wavelengths from 266 nm to 1550 nm
- Quarter- and Half-Wave Plates Available
- AR Coated on Front and Back Surfaces\
- Ø1/2" and Ø1" Wave Plate Options Available in Most Wavelengths
- Custom Options Available, Contact Tech Support for More Information
- OEM Pricing Available upon Request

Webpage Features

Clicking this icon in the tables below opens a window that contains specifications, performance graphs, and mechanical drawings.

Zemax files for the wave plates on this page can be accessed by clicking this icon below.

Common Specifications

Material	Crystalline Quartz
Beam Deviation	<10 arcsec
Transmitted Wavefront Error	λ/10 @ 633 nm
Surface Quality	20-10 Scratch-Dig
Reflectance (per Surface)	<0.25%

Updated Engraving

Thorlabs' wave plate assembly process and associated engravings have been updated to follow the IEEE/SP1E convention for fast and slow axes. See the *Tutorial* tab for details.



Thorlabs' multi-order wave plates are made from high-quality crystalline quartz and provide either quarter-wave or half-wave retardance at a variety of popular wavelengths. In most cases, each wave plate is available as a Ø1/2" optic mounted in a Ø1" unthreaded housing or Ø1" optic mounted in an engraved SM1-threaded (1.035"-40) lens tube (see below for more details). Half-wave plates are typically used to rotate the polarization of light, while quarter-wave plates are chosen if one wants to convert linearly polarized light into circularly polarized light.

The term "multi-order" refers to the fact that the retardance of a light path will undergo a certain number of full wavelength shifts (also referred to as the order, or m) in addition to the fractional design retardance. Compared to their zero-order counterparts, the retardance of multi-order wave plates is more sensitive to

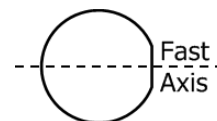
wavelength and temperature changes. Multi-order wave plates are, however, a more economical solution for many applications where increased sensitivities are not an issue. Thorlabs also offers Dual Wavelength Multi-Order Wave Plates designed for use at both 532 nm and 1064 nm.

Each wave plate is mounted in an anodized aluminum housing that is engraved with a line indicating the orientation of the fast axis of the wave plate. In addition, engraved text specifies the order of wave plate (i.e., multi-order), whether it is a $\lambda/4$ or $\lambda/2$ wave plate, and the wavelength for which the wave plate was designed.

Thorlabs can also produce custom wave plates with no AR coating, a different AR coating, or a different design wavelength than those offered below. Please contact Tech Support with inquiries.

Mounting Options

The wave plates are available in two sizes. The $\text{Ø}1/2$ " version wave plates have an OD of 12.7 ± 0.1 mm and have a mounted diameter of $\text{Ø}1$ ". The $\text{Ø}1$ " version wave plates have an OD of 25.4 ± 0.1 mm and have a mounted diameter of 30.48 mm (1.20"). The $\text{Ø}1$ " models have both an internal and external SM1 thread and can be connected to our SM1-threaded products, including rotation mounts. With a $\text{Ø}1$ " housing, the $\text{Ø}1/2$ " models are also compatible with our SM1-threaded products but require an SM1 retaining ring for secure mounting.



The wave plates are easily removed from their mounts for use in custom or OEM applications (see the Specifications popups below for the unmounted wave plate thickness). The unmounted wave plates have a small flat to indicate the polarization axis (see the image to the right). For further information on using and selecting a wave plate, please see our *Wave Plate Selection Guide* tab or contact Tech Support.

Wave Plate Selection Guide

Wave Plate Selection Guide									
Achromatic	Superachromatic	Quartz Zero-Order Half-Wave	Quartz Zero-Order Quarter-Wave	Polymer Zero-Order Half-Wave	Polymer Zero-Order Quarter-Wave	Multi-Order	Dual Wavelength	Telecom	Polarization Optics

TUTORIAL

Operating Principle of Wave Plates

Optical wave plates are constructed from birefringent materials that have a difference in refractive index between two orthogonal axes. This birefringent property introduces a velocity difference between light polarized along the fast and slow principal axes of the wave plate. The fast principal axis of the wave plate has a lower refractive index, resulting in a faster velocity for light polarized in this direction. Conversely, the slow axis has a higher refractive index, resulting in a slower velocity for light with this polarization. When light passes through a wave plate, this velocity difference leads to a phase difference between the two orthogonal polarization components. The actual phase shift depends on the properties of the material, the thickness of the wave plate, and the wavelength of the signal, and can be described as:

$$\Delta\phi = \frac{2\pi d(n_1 - n_2)}{\lambda}$$

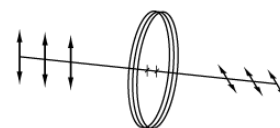
where n_1 is the refractive index along the slow axis, n_2 is the refractive index along the orthogonal fast axis, d is the thickness of the wave plate, and λ is the signal wavelength.

Using a Wave Plate

Wave plates are typically available with a retardance of $\lambda/4$ or $\lambda/2$, meaning that a phase shift of a quarter wavelength or a half a wavelength (respectively) is created.

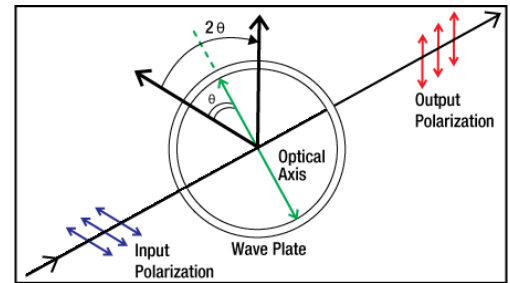
Half-Wave

As described above, a wave plate has two principal axes: fast and slow. Each axis has a different refractive index and, therefore, a different wave velocity. When a linearly polarized beam is incident on a half-wave plate, and the polarization of this beam does not coincide with one of these axes, the output polarization will be linear and rotated with respect to the polarization of the input beam (see image at right). When applying a



circularly polarized beam, a clockwise (counterclockwise) circular polarization will transform into a counterclockwise (clockwise) circular polarization.

Half-wave ($\lambda/2$) plates are typically used as polarization rotators. Mounted on a rotation mount, a $\lambda/2$ wave plate can be used as a continuously adjustable polarization rotator, as shown below. Additionally, when used in conjunction with a Polarizing Beamsplitter a $\lambda/2$ wave plate can be used as a variable ratio beamsplitter.



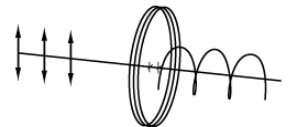
The angle between the output polarization and the input polarization will be twice the angle between the input polarization and the wave plate's axis (see diagram to the lower right). When the polarization of the input beam is directed along one of the axes of the wave plate, the polarization direction will remain unchanged.



Click to Enlarge
Half-Wave Plate Mounted in
RSP1X15 Rotation Mount

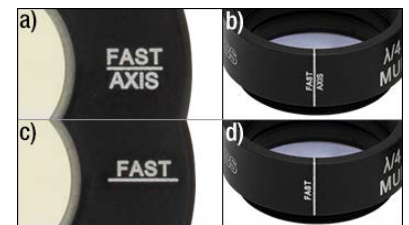
Quarter-Wave

A quarter-wave plate is designed such that the phase shift created between the fast and slow axes is a quarter wavelength ($\lambda/4$). If the input beam is linearly polarized with the polarization plane aligned at 45° to the wave plate's fast or slow axis, then the output beam will be circularly polarized (see image at right). If the linearly polarized beam is aligned at an angle other than 45° , then the output will be elliptically polarized. Conversely, the application of a circularly polarized beam to a $\lambda/4$ wave plate results in a linearly polarized output beam. Quarter wave plates are used in Optical Isolators, optical pumps, and EO Modulators.



Fast and Slow Axis Identification

In October 2018, Thorlabs updated its wave plate assembly process and associated product engravings to be consistent with the IEEE/SPIE convention (see the Polarization Handedness Tutorial) for determining the fast and slow axes. By this convention, the current revisions of wave plates have the fast axis denoted by the "FAST AXIS" engraving visible in Figure 1 to the right. Although the location of the axes and the retardation value for each wave plate is easily determined, differentiating between the fast and slow axes is far more involved.



Click to Enlarge
Figure 1: Top Images (a,b): Engraving Reflects
Updated Assembly Process as of October 2018;
Bottom Images (c,d): Past Engraving

For most applications, the knowledge of whether an axis is fast or slow is not nearly as important as the retardation value. However, the fast/slow difference determines the left/right-hand circular polarization of light output from a quarter-wave plate, which can be important in applications such as atomic and solid state physics spectroscopy. To ensure the accuracy of our labeling moving forward, we have incorporated several redundant testing setups into our production processes, as described below.

Test Setup 1: Reflection Off Uncoated Metal with $n > 1$

This test setup is based on the method of Petre Logofatu¹, which is also summarized well by Galgano and Henriques². In this method, a light source passes through a generator, which is a linear polarizer oriented at 45° to the horizontal. Then, the light passes through the wave plate sample under test (SUT), is reflected off an uncoated metal surface (any metal with $n > 1$ will suffice), and passes through an analyzer (a second linear polarizer oriented at 90° to the generator). The light is then measured by a power sensor.

Our setup, shown in Figure 2 to the right, used a HeNe laser as the light source, two GTH10M-A Glan-Taylor polarizers as the generator and analyzer, a custom uncoated stainless steel reflective surface, an S120C power sensor, and a PM100D power meter console. A full parts list,



Click to Enlarge
Figure 2: Uncoated Metal Reflection Wave Plate Test Setup

except the custom metal surface and SUT, is provided below Figure 2.

[APPLIST]
[APPLIST]

As described by Logofatu, the power reflection coefficient, R in the equation below, can be derived from the Fresnel equations, showing that there will be a large difference in reflection off the metal depending on whether the fast or the slow axis of the SUT is horizontal.

$$R = |r|^2 = \frac{[R_p + R_s + 2R_p R_s \cos(\pm\Delta + \varphi)]}{4}$$

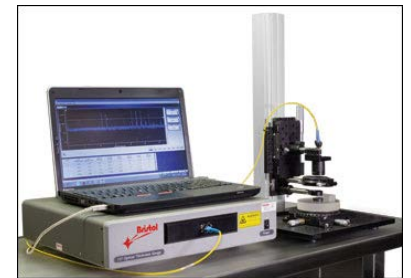
where R_p and R_s represent the p-polarized and s-polarized components of R , Δ is the retardance of the SUT, and φ is the phase difference between the p and s reflection coefficients of the metallic surface. From this, we can determine which axis we would expect

a higher reflection value when horizontal, and compare expected values to experimental values. Using a large angle of incidence allows for a large separation between s and p coefficients. This correlates with high versus low measured reflection, enabling easy determination of fast versus slow axis. As in both papers, the test was performed at a variety of angles. The results were then fitted to a theoretical curve.

Test Setup 2: Low Coherence Interferometry

This test setup uses low coherence interferometry to measure the optical path length (OPL) of the SUT as it is rotated, where the longest OPL corresponds with the slow axis, and the shortest OPL corresponds with the fast axis. This method is additionally verified by modifying the reference arm of the interferometer, adding a reference window and specular back surface to allow for calculation of the group index (n_{gSUT}) along and normal to the crystal axis. These values can then be compared to known values, assuring the reliability of this test.

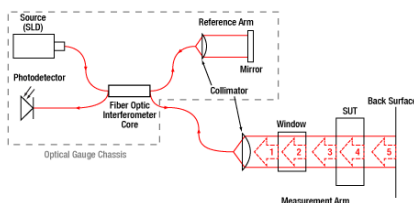
Our setup, shown in Figure 3 to the right, used a modified Bristol 157 Series Optical Gauge. As can be seen in Figure 4 below, the majority of the low coherence interferometer is contained within the chassis of the optical gauge^a. The measurement arm is then modified with Thorlabs components, such that the fiber output can be aligned with a low NA objective, passed through a LPNIR100 linear polarizer and partially reflected off a WG11010 reference window, all mounted on a 34 mm rail. The light then reflects off the SUT and a custom specular back surface to send the interferometric signal back to the optical gauge.



Click to Enlarge
Figure 3: Low Coherence Interferometry Wave Plate Testing Setup

The additional reference surfaces and resulting physical thickness are used to double check the validity of the results. This is done with a quick calculation to determine the group index of both the fast and slow axes. Figure 5 shows a qualitative representation of the output produced by this setup. Peaks 1 and 2 are created by the reference window, Peaks 3 and 4 by the SUT wave plate, while Peak 5 is generated by the reference surface. Thickness data from peak to peak are calculated by the software and output into a table. By first taking the distance from Peak 2 to Peak 5 before the wave plate is inserted, the total physical thickness, T_{air0} , is obtained^b. When inserting the wave plate, we can then take the distance from Peak 2 to 3, T_{air1} , and Peak 4 to 5, T_{air2} . Using this information we can easily calculate the thickness of the wave plate, T_{SUT} by subtracting T_{air1} and T_{air2} from T_{air0} . Measuring the distance from Peak 3 to Peak 4 would give us OPL_{SUT} . Dividing OPL_{SUT} by T_{SUT} produces the group index of the SUT, n_{gSUT} . Comparing this group index to that provided in literature for quartz³ or MgF_2 ⁴ both along and normal to the crystal axis, we are in good agreement.

- Please note Figure 4 is a sample illustration and is not intended to accurately represent the internals of the Bristol optical gauge.
- For the precision required in this case, it is sufficient to assume the OPL in air is equal to the physical thickness.

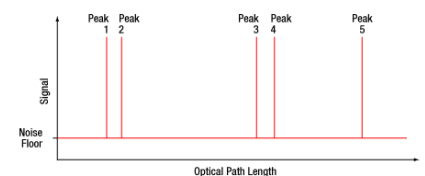


Click to Enlarge

Figure 4: Example Low Coherence Interferometry Diagram;

Numbered reflections in the measurement arm correspond with peak numbers in Figure 5.

1. Galgano, G. D., and A. B. Henriques. "Determining the fast axis of a wave plate." Proceedings do ENFMC (2006).
2. Logofatu, Petre-Catalin. "Simple method for determining the fast axis of a wave plate." Optical Engineering 41.12 (2002): 3316-3319.
3. Ghosh, Gorachand. "Dispersion-equation coefficients for the refractive index and birefringence of calcite and quartz crystals." Optics communications 163.1-3 (1999): 95-102.
4. Dodge, Marilyn J. "Refractive properties of magnesium fluoride." Applied Optics 23.12 (1984): 1980-1985.



Click to Enlarge

Figure 5: Representation of Output from Optical Gauge

Damage Threshold Data for Thorlabs' Wave Plates

The specifications to the right are measured data for Thorlabs' wave plates. Damage threshold specifications are constant for a given suffix.

Damage Threshold Specifications	
Coating Designation (Item # Suffix)	Damage Threshold
-266	10 J/cm ² (266 nm, 10 ns, 10 Hz, Ø0.228 mm)
-355	10 J/cm ² (355 nm, 10 ns, 10 Hz, Ø0.179 mm)
-532	10 J/cm ² (532 nm, 10 ns, 10 Hz, Ø0.242 mm)
-808	10 J/cm ² (810 nm, 10 ns, 10 Hz, Ø0.055 mm)
-05M-1064	10 J/cm ² (1064 nm, 10 ns, 10 Hz, Ø0.433 mm)
-05M-1550	20 J/cm ² (1542 nm, 10 ns, 10 Hz, Ø0.105 mm)

Laser Induced Damage Threshold Tutorial

The following is a general overview of how laser induced damage thresholds are measured and how the values may be utilized in determining the appropriateness of an optic for a given application. When choosing optics, it is important to understand the Laser Induced Damage Threshold (LIDT) of the optics being used. The LIDT for an optic greatly depends on the type of laser you are using. Continuous wave (CW) lasers typically cause damage from thermal effects (absorption either in the coating or in the substrate). Pulsed lasers, on the other hand, often strip electrons from the lattice structure of an optic before causing thermal damage. Note that the guideline presented here assumes room temperature operation and optics in new condition (i.e., within scratch-dig spec, surface free of contamination, etc.). Because dust or other particles on the surface of an optic can cause damage at lower thresholds, we recommend keeping surfaces clean and free of debris. For more information on cleaning optics, please see our *Optics Cleaning* tutorial.

Testing Method

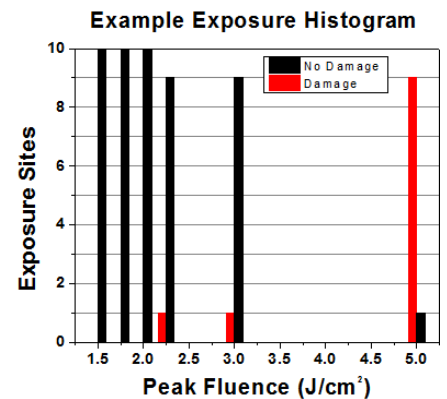
Thorlabs' LIDT testing is done in compliance with ISO/DIS 11254 and ISO 21254 specifications.

First, a low-power/energy beam is directed to the optic under test. The optic is exposed in 10 locations to this laser beam for 30 seconds (CW) or for a number of pulses (pulse repetition frequency specified). After exposure, the optic is examined by a microscope (~100X magnification) for any visible damage. The number of locations that are damaged at a particular power/energy level is recorded. Next, the power/energy is either increased or decreased and the optic is exposed at 10 new locations. This process is repeated until damage is observed. The damage threshold is then assigned to be the highest power/energy that the optic can withstand without causing damage. A histogram such as that below represents the testing of one BB1-E02 mirror.



The photograph above is a protected aluminum-coated mirror after LIDT testing. In this particular test, it handled 0.43 J/cm² (1064 nm, 10 ns pulse, 10 Hz, Ø1.000 mm) before damage.

According to the test, the damage threshold of the mirror was 2.00 J/cm² (532 nm, 10 ns pulse, 10 Hz, Ø0.803 mm). Please keep in mind that these tests are performed on clean optics, as dirt and contamination can significantly lower the damage threshold of a component. While the test results are only representative of one coating run, Thorlabs specifies damage threshold values that account for coating variances.



Example Test Data			
Fluence	# of Tested Locations	Locations with Damage	Locations Without Damage
1.50 J/cm ²	10	0	10
1.75 J/cm ²	10	0	10
2.00 J/cm ²	10	0	10
2.25 J/cm ²	10	1	9
3.00 J/cm ²	10	1	9

Continuous Wave and Long-Pulse Lasers

5.00 J/cm ²	10	9	1
------------------------	----	---	---

When an optic is damaged by a continuous wave (CW) laser, it is usually due to the melting of the surface as a result of absorbing the laser's energy or damage to the optical coating (antireflection) [1]. Pulsed lasers with pulse lengths longer than 1 μs can be treated as CW lasers for LIDT discussions.

When pulse lengths are between 1 ns and 1 μs, laser-induced damage can occur either because of absorption or a dielectric breakdown (therefore, a user must check both CW and pulsed LIDT). Absorption is either due to an intrinsic property of the optic or due to surface irregularities; thus LIDT values are only valid for optics meeting or exceeding the surface quality specifications given by a manufacturer. While many optics can handle high power CW lasers, cemented (e.g., achromatic doublets) or highly absorptive (e.g., ND filters) optics tend to have lower CW damage thresholds. These lower thresholds are due to absorption or scattering in the cement or metal coating.

Pulsed lasers with high pulse repetition frequencies (PRF) may behave similarly to CW beams. Unfortunately, this is highly dependent on factors such as absorption and thermal diffusivity, so there is no reliable method for determining when a high PRF laser will damage an optic due to thermal effects. For beams with a high PRF both the average and peak powers must be compared to the equivalent CW power. Additionally, for highly transparent materials, there is little to no drop in the LIDT with increasing PRF.

In order to use the specified CW damage threshold of an optic, it is necessary to know the following:

1. Wavelength of your laser
2. Beam diameter of your beam (1/e²)
3. Approximate intensity profile of your beam (e.g., Gaussian)
4. Linear power density of your beam (total power divided by 1/e² beam diameter)

Thorlabs expresses LIDT for CW lasers as a linear power density measured in W/cm. In this regime, the LIDT given as a linear power density can be applied to any beam diameter; one does not need to compute an adjusted LIDT to adjust for changes in spot size, as demonstrated by the graph to the right. Average linear power density can be calculated using the equation below.

$$\text{Linear Power Density} = \frac{\text{Power}}{\text{Beam Diameter}}$$

The calculation above assumes a uniform beam intensity profile. You must now consider hotspots in the beam or other non-uniform intensity profiles and roughly calculate a maximum power density. For reference, a Gaussian beam typically has a maximum power density that is twice that of the uniform beam (see lower right).

Now compare the maximum power density to that which is specified as the LIDT for the optic. If the optic was tested at a wavelength other than your operating wavelength, the damage threshold must be scaled appropriately. A good rule of thumb is that the damage threshold has a linear relationship with wavelength such that as you move to shorter wavelengths, the damage threshold decreases (i.e., a LIDT of 10 W/cm at 1310 nm scales to 5 W/cm at 655 nm):

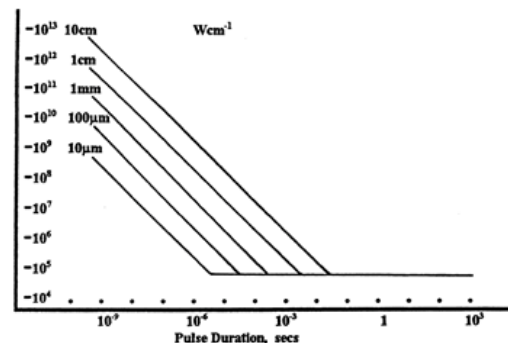
$$\text{Adjusted LIDT} = \text{LIDT Power} \left(\frac{\text{Your Wavelength}}{\text{LIDT Wavelength}} \right)$$

While this rule of thumb provides a general trend, it is not a quantitative analysis of LIDT vs wavelength. In CW applications, for instance, damage scales more strongly with absorption in the coating and substrate, which does not necessarily scale well with wavelength. While the above procedure provides a good rule of thumb for LIDT values, please contact Tech Support if your wavelength is different from the specified LIDT wavelength. If your power density is less than the adjusted LIDT of the optic, then the optic should work for your application.

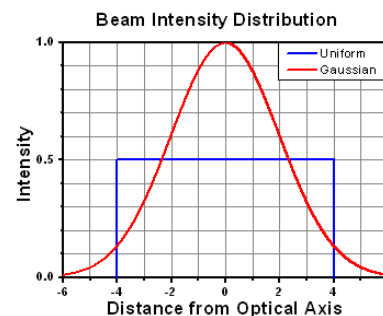
Please note that we have a buffer built in between the specified damage thresholds online and the tests which we have done, which accommodates variation between batches. Upon request, we can provide individual test information and a testing certificate. The damage analysis will be carried out on a similar optic (customer's optic will not be damaged). Testing may result in additional costs or lead times. Contact Tech Support for more information.

Pulsed Lasers

As previously stated, pulsed lasers typically induce a different type of damage to the optic than CW lasers. Pulsed lasers often do not heat the optic enough to



LIDT in linear power density vs. pulse length and spot size. For long pulses to CW, linear power density becomes a constant with spot size. This graph was obtained from [1].



damage it; instead, pulsed lasers produce strong electric fields capable of inducing dielectric breakdown in the material. Unfortunately, it can be very difficult to compare the LIDT specification of an optic to your laser. There are multiple regimes in which a pulsed laser can damage an optic and this is based on the laser's pulse length. The highlighted columns in the table below outline the relevant pulse lengths for our specified LIDT values.

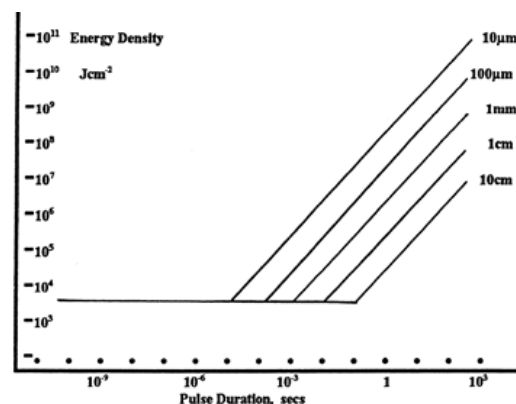
Pulses shorter than 10^{-9} s cannot be compared to our specified LIDT values with much reliability. In this ultra-short-pulse regime various mechanics, such as multiphoton-avalanche ionization, take over as the predominate damage mechanism [2]. In contrast, pulses between 10^{-7} s and 10^{-4} s may cause damage to an optic either because of dielectric breakdown or thermal effects. This means that both CW and pulsed damage thresholds must be compared to the laser beam to determine whether the optic is suitable for your application.

Pulse Duration	$t < 10^{-9}$ s	$10^{-9} < t < 10^{-7}$ s	$10^{-7} < t < 10^{-4}$ s	$t > 10^{-4}$ s
Damage Mechanism	Avalanche Ionization	Dielectric Breakdown	Dielectric Breakdown or Thermal	Thermal
Relevant Damage Specification	No Comparison (See Above)	Pulsed	Pulsed and CW	CW

When comparing an LIDT specified for a pulsed laser to your laser, it is essential to know the following:

1. Wavelength of your laser
2. Energy density of your beam (total energy divided by $1/e^2$ area)
3. Pulse length of your laser
4. Pulse repetition frequency (prf) of your laser
5. Beam diameter of your laser ($1/e^2$)
6. Approximate intensity profile of your beam (e.g., Gaussian)

The energy density of your beam should be calculated in terms of J/cm^2 . The graph to the right shows why expressing the LIDT as an energy density provides the best metric for short pulse sources. In this regime, the LIDT given as an energy density can be applied to any beam diameter; one does not need to compute an adjusted LIDT to adjust for changes in spot size. This calculation assumes a uniform beam intensity profile. You must now adjust this energy density to account for hotspots or other nonuniform intensity profiles and roughly calculate a maximum energy density. For reference a Gaussian beam typically has a maximum energy density that is twice that of the $1/e^2$ beam.



LIDT in energy density vs. pulse length and spot size. For short pulses, energy density becomes a constant with spot size. This graph was obtained from [1].

Now compare the maximum energy density to that which is specified as the LIDT for the optic. If the optic was tested at a wavelength other than your operating wavelength, the damage threshold must be scaled appropriately [3]. A good rule of thumb is that the damage threshold has an inverse square root relationship with wavelength such that as you move to shorter wavelengths, the damage threshold decreases (i.e., a LIDT of $1 J/cm^2$ at 1064 nm scales to $0.7 J/cm^2$ at 532 nm):

$$\text{Adjusted LIDT} = \text{LIDT Energy} \sqrt{\frac{\text{Your Wavelength}}{\text{LIDT Wavelength}}}$$

You now have a wavelength-adjusted energy density, which you will use in the following step.

Beam diameter is also important to know when comparing damage thresholds. While the LIDT, when expressed in units of J/cm^2 , scales independently of spot size; large beam sizes are more likely to illuminate a larger number of defects which can lead to greater variances in the LIDT [4]. For data presented here, a <1 mm beam size was used to measure the LIDT. For beams sizes greater than 5 mm, the LIDT (J/cm^2) will not scale independently of beam diameter due to the larger size beam exposing more defects.

The pulse length must now be compensated for. The longer the pulse duration, the more energy the optic can handle. For pulse widths between $1 - 100$ ns, an approximation is as follows:

$$\text{Adjusted LIDT} = \text{LIDT Energy} \sqrt{\frac{\text{Your Pulse Length}}{\text{LIDT Pulse Length}}}$$

Use this formula to calculate the Adjusted LIDT for an optic based on your pulse length. If your maximum energy density is less than this adjusted LIDT maximum energy density, then the optic should be suitable for your application. Keep in mind that this calculation is only used for pulses between 10^{-9} s and 10^{-7} s. For pulses between 10^{-7} s and 10^{-4} s, the CW LIDT must also be checked before deeming the optic appropriate for your application.

Please note that we have a buffer built in between the specified damage thresholds online and the tests which we have done, which accommodates variation between batches. Upon request, we can provide individual test information and a testing certificate. Contact Tech Support for more information.

[1] R. M. Wood, *Optics and Laser Tech.* **29**, 517 (1998).

[2] Roger M. Wood, *Laser-Induced Damage of Optical Materials* (Institute of Physics Publishing, Philadelphia, PA, 2003).

[3] C. W. Carr *et al.*, *Phys. Rev. Lett.* **91**, 127402 (2003).

[4] N. Bloembergen, *Appl. Opt.* **12**, 661 (1973).

LIDT CALCULATIONS

In order to illustrate the process of determining whether a given laser system will damage an optic, a number of example calculations of laser induced damage threshold are given below. For assistance with performing similar calculations, we provide a spreadsheet calculator that can be downloaded by clicking the button to the right. To use the calculator, enter the specified LIDT value of the optic under consideration and the relevant parameters of your laser system in the green boxes. The spreadsheet will then calculate a linear power density for CW and pulsed systems, as well as an energy density value for pulsed systems. These values are used to calculate adjusted, scaled LIDT values for the optics based on accepted scaling laws. This calculator assumes a Gaussian beam profile, so a correction factor must be introduced for other beam shapes (uniform, etc.). The LIDT scaling laws are determined from empirical relationships; their accuracy is not guaranteed. Remember that absorption by optics or coatings can significantly reduce LIDT in some spectral regions. These LIDT values are not valid for ultrashort pulses less than one nanosecond in duration.

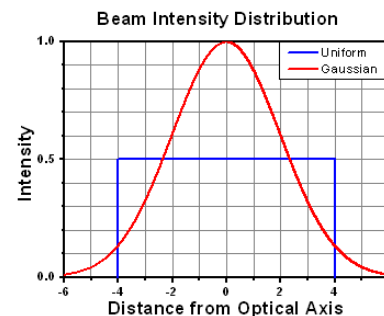
[LIDT Calculator](#)

CW Laser Example

Suppose that a CW laser system at 1319 nm produces a 0.5 W Gaussian beam that has a $1/e^2$ diameter of 10 mm. A naive calculation of the average linear power density of this beam would yield a value of 0.5 W/cm, given by the total power divided by the beam diameter:

$$\text{Linear Power Density} = \frac{\text{Power}}{\text{Beam Diameter}}$$

However, the maximum power density of a Gaussian beam is about twice the maximum power density of a uniform beam, as shown in the graph to the right. Therefore, a more accurate determination of the maximum linear power density of the system is 1 W/cm.



A Gaussian beam profile has about twice the maximum intensity of a uniform beam profile.

An AC127-030-C achromatic doublet lens has a specified CW LIDT of 350 W/cm, as tested at 1550 nm. CW damage threshold values typically scale directly with the wavelength of the laser source, so this yields an adjusted LIDT value:

$$\text{Adjusted LIDT} = \text{LIDT Power} \left(\frac{\text{Your Wavelength}}{\text{LIDT Wavelength}} \right)$$

The adjusted LIDT value of $350 \text{ W/cm} \times (1319 \text{ nm} / 1550 \text{ nm}) = 298 \text{ W/cm}$ is significantly higher than the calculated maximum linear power density of the laser system, so it would be safe to use this doublet lens for this application.

Pulsed Nanosecond Laser Example: Scaling for Different Pulse Durations

Suppose that a pulsed Nd:YAG laser system is frequency tripled to produce a 10 Hz output, consisting of 2 ns output pulses at 355 nm, each with 1 J of energy, in a Gaussian beam with a 1.9 cm beam diameter ($1/e^2$). The average energy density of each pulse is found by dividing the pulse energy by the beam area:

$$\text{Energy Density} = \frac{\text{Pulse Energy}}{\text{Beam Area}}$$

As described above, the maximum energy density of a Gaussian beam is about twice the average energy density. So, the maximum energy density of this beam is $\sim 0.7 \text{ J/cm}^2$.

The energy density of the beam can be compared to the LIDT values of 1 J/cm^2 and 3.5 J/cm^2 for a BB1-E01 broadband dielectric mirror and an NB1-K08 Nd:YAG laser line mirror, respectively. Both of these LIDT values, while measured at 355 nm, were determined with a 10 ns pulsed laser at 10 Hz. Therefore, an adjustment must be applied for the shorter pulse duration of the system under consideration. As described on the previous tab, LIDT values in the nanosecond pulse regime scale with the square root of the laser pulse duration:

$$\text{Adjusted LIDT} = \text{LIDT Energy} \sqrt{\frac{\text{Your Pulse Length}}{\text{LIDT Pulse Length}}}$$

This adjustment factor results in LIDT values of 0.45 J/cm^2 for the BB1-E01 broadband mirror and 1.6 J/cm^2 for the Nd:YAG laser line mirror, which are to be compared with the 0.7 J/cm^2 maximum energy density of the beam. While the broadband mirror would likely be damaged by the laser, the more specialized laser line mirror is appropriate for use with this system.

Pulsed Nanosecond Laser Example: Scaling for Different Wavelengths

Suppose that a pulsed laser system emits 10 ns pulses at 2.5 Hz, each with 100 mJ of energy at 1064 nm in a 16 mm diameter beam ($1/e^2$) that must be attenuated with a neutral density filter. For a Gaussian output, these specifications result in a maximum energy density of 0.1 J/cm^2 . The damage threshold of an NDUV10A Ø25 mm, OD 1.0, reflective neutral density filter is 0.05 J/cm^2 for 10 ns pulses at 355 nm, while the damage threshold of the similar NE10A absorptive filter is 10 J/cm^2 for 10 ns pulses at 532 nm. As described on the previous tab, the LIDT value of an optic scales with the square root of the wavelength in the nanosecond pulse regime:

$$\text{Adjusted LIDT} = \text{LIDT Energy} \sqrt{\frac{\text{Your Wavelength}}{\text{LIDT Wavelength}}}$$

This scaling gives adjusted LIDT values of 0.08 J/cm^2 for the reflective filter and 14 J/cm^2 for the absorptive filter. In this case, the absorptive filter is the best choice in order to avoid optical damage.

Pulsed Microsecond Laser Example

Consider a laser system that produces 1 μs pulses, each containing 150 μJ of energy at a repetition rate of 50 kHz, resulting in a relatively high duty cycle of 5%. This system falls somewhere between the regimes of CW and pulsed laser induced damage, and could potentially damage an optic by mechanisms associated with either regime. As a result, both CW and pulsed LIDT values must be compared to the properties of the laser system to ensure safe operation.

If this relatively long-pulse laser emits a Gaussian 12.7 mm diameter beam ($1/e^2$) at 980 nm, then the resulting output has a linear power density of 5.9 W/cm and an energy density of $1.2 \times 10^{-4} \text{ J/cm}^2$ per pulse. This can be compared to the LIDT values for a WPQ10E-980 polymer zero-order quarter-wave plate, which are 5 W/cm for CW radiation at 810 nm and 5 J/cm^2 for a 10 ns pulse at 810 nm. As before, the CW LIDT of the optic scales linearly with the laser wavelength, resulting in an adjusted CW value of 6 W/cm at 980 nm. On the other hand, the pulsed LIDT scales with the square root of the laser wavelength and the square root of the pulse duration, resulting in an adjusted value of 55 J/cm^2 for a 1 μs pulse at 980 nm. The pulsed LIDT of the optic is significantly greater than the energy density of the laser pulse, so individual pulses will not damage the wave plate. However, the large average linear power density of the laser system may cause thermal damage to the optic, much like a high-power CW beam.

WAVE PLATE SELECTION GUIDE

Choosing a Wave Plate

Thorlabs offers achromatic, superachromatic, zero-order (both unmounted wave plates and mounted wave plates), low-order, and multi-order wave plates (single wavelength and dual wavelength) with either $\lambda/4$ or $\lambda/2$ phase shift.

Achromatic Wave Plates provide phase retardance that is relatively independent of wavelength over a wide spectral range, and Superachromatic Wave Plates provide phase retardance almost entirely independent of wavelength over a much wider range than achromatic wave plates. In contrast, zero-order and multi-order wave plates provide a phase shift that is strongly wavelength dependent. Our achromatic wave plates are available with four operating ranges: 260 - 410 nm, 350 - 850 nm, 400 - 800 nm, 690 - 1200 nm, and 1100 - 2000 nm. Additionally, we offer superachromatic wave plates for the 310 - 1100 nm and 600 - 2700 nm ranges.

Zero-order wave plates are designed such that the phase shift created is exactly one quarter or one half of a wave. They offer substantially lower dependence on temperature and wavelength than multi-order wave plates. Our Zero-Order Quartz Half-Wave and Quarter-Wave Plates are composed of two wave plates stacked together with the fast axis of one aligned to the slow axis of the other to achieve zero-order performance. Thorlabs' zero-order wave plates are available for a number of discrete wavelengths ranging from 266 nm to 2020 nm. Our Polymer Zero-Order Half-Wave and Quarter-Wave Plates consist of a thin layer of liquid crystal polymer retarding material sandwiched between two glass plates and are available at discrete wavelengths between 405 nm and 1550 nm. Our quartz zero-order wave plates provide better retardance accuracy and lower reflectance (see table), while our LCP zero-order wave plates produce a smaller decrease in retardance at larger AOIs. In addition, Thorlabs also offers unmounted true Zero-Order Telecom Wave Plates for WDM applications.

Round Zero-Order Wave Plate Comparison		
Material	Quartz	LCP
Sizes	Ø1/2" and Ø1"	Ø1/2", Ø1", and Ø2"
Mounted Versions Available	Yes	Yes
Retardances Available	1/4 λ and 1/2 λ	1/4 λ and 1/2 λ
Retardance Accuracy	<λ/300	<λ/100
Surface Quality	20-10 Scratch-Dig	60-40 Scratch-Dig
Coating	V Coat	Broadband AR
Coating Reflectance (per Surface)	0.25%	0.5% Average Over Specified Coating Range

MIR Wave Plates are made from a single piece of high-quality magnesium fluoride and provide either quarter-wave or half-wave retardance at 2.5 μm, 3.5 μm, 4.0 μm, 4.5 μm, or 5.3 μm. Light passing through these MIR wave plates will undergo a low number of full or partial wavelength shifts (also referred to as the order, or m) in addition to the fractional design retardance. This differs from true zero-order and multi-order wave plates which undergo no shift or a high number of shifts, respectively. The low-order design maintains near to true zero-order performance, making it a good alternative to true zero-order wave plates. The single magnesium fluoride substrate is also thinner compared to a zero-order design, which combines two multi-order wave plates, making our low-order retarders well suited for applications that are sensitive to dispersion.

Multi-Order Wave Plates are made such that the retardance of a light path will undergo a certain number of full wavelength shifts (also referred to as the order, or m) in addition to the fractional design retardance. Compared to their zero-order counterparts, the retardance of multi-order wave plates is more sensitive to wavelength and temperature changes. Multi-order wave plates are, however, a more economical solution for many applications where increased sensitivities are not an issue. Our multi-order wave plates are available for a number of discrete wavelengths ranging from 266 nm to 1550 nm. Thorlabs also offers Dual-Wavelength Multi-Order Wave Plates designed for use at both 532 nm and 1064 nm.

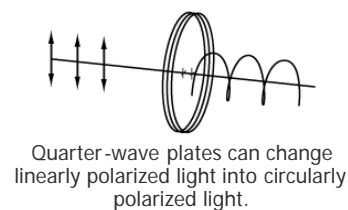
In addition to these options, Thorlabs also has the ability to design and manufacture custom wave plates for both OEM sales and individual low quantity orders. Our technical staff is able to help with all phases of your request: quoting, sales, and planning and manufacturing support. If you have a custom request or a question about our capabilities, please contact Tech Support to start a discussion.

A

Ø1/2" Multi-Order Quarter-Wave Plates

Item #	Specifications
WPMQ05M-266	i
WPMQ05M-355	i
WPMQ05M-405	i
WPMQ05M-488	i
WPMQ05M-514	i
WPMQ05M-532	i
WPMQ05M-633	i
WPMQ05M-670	i

Item #	Specifications
WPMQ05M-780	i
WPMQ05M-808	i
WPMQ05M-830	i
WPMQ05M-980	i
WPMQ05M-1053	i
WPMQ05M-1064	i
WPMQ05M-1310	i
WPMQ05M-1550	i



















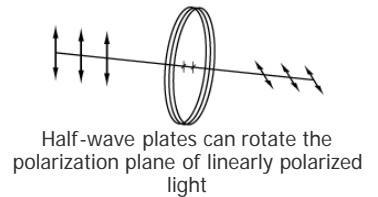
Part Number	Description	Price	Availability
WPMQ05M-266	Ø1/2" Mounted Multi-Order Quarter-Wave Plate, Ø1" Mount, 266 nm	\$259.70	Lead Time
WPMQ05M-355	Ø1/2" Mounted Multi-Order Quarter-Wave Plate, Ø1" Mount, 355 nm	\$259.70	5-8 Days

WPMQ05M-405	Ø1/2" Mounted Multi-Order Quarter-Wave Plate, Ø1" Mount, 405 nm	\$259.70	Today
WPMQ05M-488	Ø1/2" Mounted Multi-Order Quarter-Wave Plate, Ø1" Mount, 488 nm	\$259.70	Today
WPMQ05M-514	Ø1/2" Mounted Multi-Order Quarter-Wave Plate, Ø1" Mount, 514 nm	\$259.70	Today
WPMQ05M-532	Ø1/2" Mounted Multi-Order Quarter-Wave Plate, Ø1" Mount, 532 nm	\$259.70	Today
WPMQ05M-633	Ø1/2" Mounted Multi-Order Quarter-Wave Plate, Ø1" Mount, 633 nm	\$259.70	Today
WPMQ05M-670	Ø1/2" Mounted Multi-Order Quarter-Wave Plate, Ø1" Mount, 670 nm	\$259.70	Today
WPMQ05M-780	Ø1/2" Mounted Multi-Order Quarter-Wave Plate, Ø1" Mount, 780 nm	\$259.70	Today
WPMQ05M-808	Ø1/2" Mounted Multi-Order Quarter-Wave Plate, Ø1" Mount, 808 nm	\$259.70	Today
WPMQ05M-830	Ø1/2" Mounted Multi-Order Quarter-Wave Plate, Ø1" Mount, 830 nm	\$259.70	Today
WPMQ05M-980	Ø1/2" Mounted Multi-Order Quarter-Wave Plate, Ø1" Mount, 980 nm	\$259.70	Today
WPMQ05M-1053	Ø1/2" Mounted Multi-Order Quarter-Wave Plate, Ø1" Mount, 1053 nm	\$259.70	Today
WPMQ05M-1064	Ø1/2" Mounted Multi-Order Quarter-Wave Plate, Ø1" Mount, 1064 nm	\$259.70	Today
WPMQ05M-1310	Ø1/2" Mounted Multi-Order Quarter-Wave Plate, Ø1" Mount, 1310 nm	\$259.70	Today
WPMQ05M-1550	Ø1/2" Mounted Multi-Order Quarter-Wave Plate, Ø1" Mount, 1550 nm	\$259.70	Today

A

Ø1/2" Multi-Order Half-Wave Plates

Item #	Specifications	Item #	Specifications
WPMH05M-266		WPMH05M-780	
WPMH05M-355		WPMH05M-808	
WPMH05M-405		WPMH05M-830	
WPMH05M-488		WPMH05M-980	
WPMH05M-514		WPMH05M-1053	
WPMH05M-532		WPMH05M-1064	
WPMH05M-633		WPMH05M-1310	
WPMH05M-670		WPMH05M-1550	

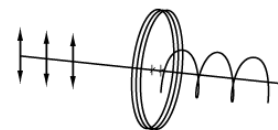


Part Number	Description	Price	Availability
WPMH05M-266	Ø1/2" Mounted Multi-Order Half-Wave Plate, Ø1" Mount, 266 nm	\$259.70	5-8 Days
WPMH05M-355	Ø1/2" Mounted Multi-Order Half-Wave Plate, Ø1" Mount, 355 nm	\$259.70	5-8 Days
WPMH05M-405	Ø1/2" Mounted Multi-Order Half-Wave Plate, Ø1" Mount, 405 nm	\$259.70	Today
WPMH05M-488	Ø1/2" Mounted Multi-Order Half-Wave Plate, Ø1" Mount, 488 nm	\$259.70	Today
WPMH05M-514	Ø1/2" Mounted Multi-Order Half-Wave Plate, Ø1" Mount, 514 nm	\$259.70	Today
WPMH05M-532	Ø1/2" Mounted Multi-Order Half-Wave Plate, Ø1" Mount, 532 nm	\$259.70	Today
WPMH05M-633	Ø1/2" Mounted Multi-Order Half-Wave Plate, Ø1" Mount, 633 nm	\$259.70	Today
WPMH05M-670	Ø1/2" Mounted Multi-Order Half-Wave Plate, Ø1" Mount, 670 nm	\$259.70	Today
WPMH05M-780	Ø1/2" Mounted Multi-Order Half-Wave Plate, Ø1" Mount, 780 nm	\$259.70	5-8 Days
WPMH05M-808	Ø1/2" Mounted Multi-Order Half-Wave Plate, Ø1" Mount, 808 nm	\$259.70	Today
WPMH05M-830	Ø1/2" Mounted Multi-Order Half-Wave Plate, Ø1" Mount, 830 nm	\$259.70	Today
WPMH05M-980	Ø1/2" Mounted Multi-Order Half-Wave Plate, Ø1" Mount, 980 nm	\$259.70	Today
WPMH05M-1053	Ø1/2" Mounted Multi-Order Half-Wave Plate, Ø1" Mount, 1053 nm	\$259.70	Today
WPMH05M-1064	Ø1/2" Mounted Multi-Order Half-Wave Plate, Ø1" Mount, 1064 nm	\$259.70	Today
WPMH05M-1310	Ø1/2" Mounted Multi-Order Half-Wave Plate, Ø1" Mount, 1310 nm	\$259.70	Today
WPMH05M-1550	Ø1/2" Mounted Multi-Order Half-Wave Plate, Ø1" Mount, 1550 nm	\$259.70	Today

Ø1" Multi-Order Quarter-Wave Plates

Item #	Specifications
WPMQ10M-355	
WPMQ10M-405	
WPMQ10M-488	
WPMQ10M-532	
WPMQ10M-633	
WPMQ10M-670	
WPMQ10M-780	

Item #	Specifications
WPMQ10M-808	
WPMQ10M-830	
WPMQ10M-980	
WPMQ10M-1053	
WPMQ10M-1064	
WPMQ10M-1550	



Quarter-wave plates can change linearly polarized light into circularly polarized light.

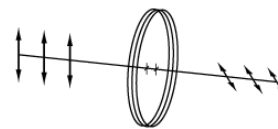
Part Number	Description	Price	Availability
WPMQ10M-355	Ø1" Multi-Order Quarter-Wave Plate, SM1-Threaded Mount, 355 nm	\$343.03	5-8 Days
WPMQ10M-405	Ø1" Multi-Order Quarter-Wave Plate, SM1-Threaded Mount, 405 nm	\$343.03	Today
WPMQ10M-488	Ø1" Multi-Order Quarter-Wave Plate, SM1-Threaded Mount, 488 nm	\$343.03	Today
WPMQ10M-532	Ø1" Multi-Order Quarter-Wave Plate, SM1-Threaded Mount, 532 nm	\$343.03	Today
WPMQ10M-633	Ø1" Multi-Order Quarter-Wave Plate, SM1-Threaded Mount, 633 nm	\$343.03	Today
WPMQ10M-670	Customer Inspired! Ø1" Multi-Order Quarter-Wave Plate, SM1-Threaded Mount, 670 nm	\$343.03	Today
WPMQ10M-780	Ø1" Multi-Order Quarter-Wave Plate, SM1-Threaded Mount, 780 nm	\$343.03	Today
WPMQ10M-808	Ø1" Multi-Order Quarter-Wave Plate, SM1-Threaded Mount, 808 nm	\$343.03	Today
WPMQ10M-830	Ø1" Multi-Order Quarter-Wave Plate, SM1-Threaded Mount, 830 nm	\$343.03	Today
WPMQ10M-980	Customer Inspired! Ø1" Multi-Order Quarter-Wave Plate, SM1-Threaded Mount, 980 nm	\$343.03	Today
WPMQ10M-1053	Customer Inspired! Ø1" Multi-Order Quarter-Wave Plate, SM1-Threaded Mount, 1053 nm	\$343.03	Today
WPMQ10M-1064	Ø1" Multi-Order Quarter-Wave Plate, SM1-Threaded Mount, 1064 nm	\$343.03	Today
WPMQ10M-1550	Ø1" Multi-Order Quarter-Wave Plate, SM1-Threaded Mount, 1550 nm	\$343.03	Today

A

Ø1" Multi-Order Half-Wave Plates

Item #	Specifications
WPMH10M-355	
WPMH10M-405	
WPMH10M-488	
WPMH10M-532	
WPMH10M-633	
WPMH10M-670	
WPMH10M-780	

Item #	Specifications
WPMH10M-808	
WPMH10M-830	
WPMH10M-980	
WPMH10M-1053	
WPMH10M-1064	
WPMH10M-1550	



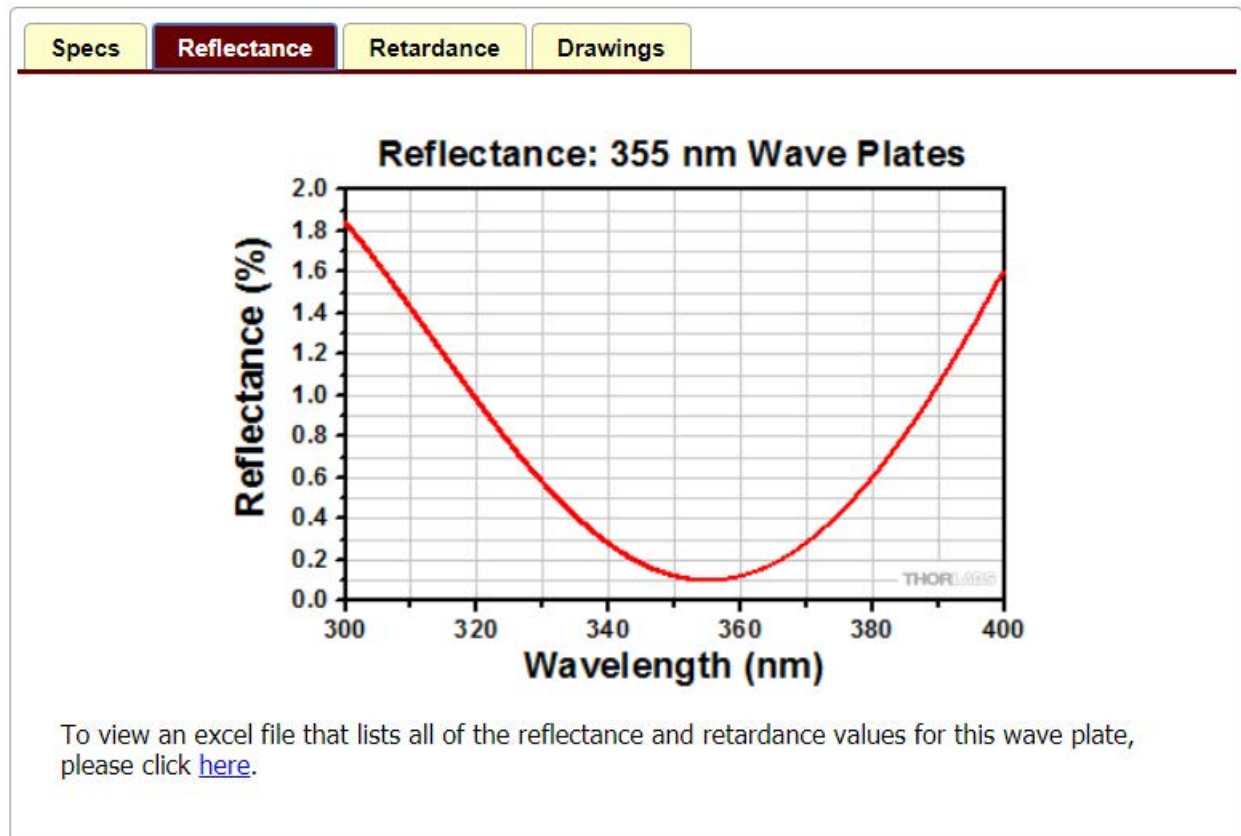
Half-wave plates can rotate the polarization plane of linearly polarized light

Part Number	Description	Price	Availability
WPMH10M-355	Ø1" Multi-Order Half-Wave Plate, SM1-Threaded Mount, 355 nm	\$343.03	5-8 Days
WPMH10M-405	Ø1" Multi-Order Half-Wave Plate, SM1-Threaded Mount, 405 nm	\$343.03	Today
WPMH10M-488	Ø1" Multi-Order Half-Wave Plate, SM1-Threaded Mount, 488 nm	\$343.03	Today
WPMH10M-532	Ø1" Multi-Order Half-Wave Plate, SM1-Threaded Mount, 532 nm	\$343.03	5-8 Days
WPMH10M-633	Ø1" Multi-Order Half-Wave Plate, SM1-Threaded Mount, 633 nm	\$343.03	Today
WPMH10M-670	Customer Inspired! Ø1" Multi-Order Half-Wave Plate, SM1-Threaded Mount, 670 nm	\$343.03	Today
WPMH10M-780	Ø1" Multi-Order Half-Wave Plate, SM1-Threaded Mount, 780 nm	\$343.03	Today
WPMH10M-808	Ø1" Multi-Order Half-Wave Plate, SM1-Threaded Mount, 808 nm	\$343.03	Today
WPMH10M-830	Ø1" Multi-Order Half-Wave Plate, SM1-Threaded Mount, 830 nm	\$343.03	Today
WPMH10M-980	Customer Inspired! Ø1" Multi-Order Half-Wave Plate, SM1-Threaded Mount, 980 nm	\$343.03	Today

WPMH10M-1053	Customer Inspired! Ø1" Multi-Order Half-Wave Plate, SM1-Threaded Mount, 1053 nm	\$343.03	Today
WPMH10M-1064	Ø1" Multi-Order Half-Wave Plate, SM1-Threaded Mount, 1064 nm	\$343.03	Today
WPMH10M-1550	Ø1" Multi-Order Half-Wave Plate, SM1-Threaded Mount, 1550 nm	\$343.03	Today



Specs	Reflectance	Retardance	Drawings
Specifications			
Clear Aperture	Ø22.6 mm (Ø0.89")		
Mounted Diameter	30.48 mm (1.20")		
Unmounted Diameter	25.4 ± 0.1 mm		
Unmounted Thickness	0.88 mm		
AR Coating	355 nm		
Reflectance (in AR Coating Range)	<0.25% Per Surface		
Beam Deviation	<10 arcsec		
Retardance Accuracy	< $\lambda/200$		
Damage Threshold	10 J/cm ² (355 nm, 10 ns, 10 Hz, Ø0.179 mm)		
Material	Crystalline Quartz		
Transmitted Wavefront Error	$\lambda/10$ @ 633		
Surface Quality	20-10 Scratch-Dig		



Specs

Reflectance

Retardance

Drawings



To view an excel file that lists all of the reflectance and retardance values for this wave plate, please click [here](#).

Specs

Reflectance

Retardance

Drawings

