

CHAPTERS

Tables/  
Breadboards

Mechanics

Optomechanic  
Devices

Kits

Lab Supplies

SECTIONS

Optics Supplies

Fiber Supplies

Electrical  
Components

Lab Tools

Safety and Blackout

Screws, Nuts,  
and Bolts

19" Rack Hardware

Storage

## Spanner Wrenches

These spanner wrenches are designed for installation and adjustment of retaining rings, lens cells, and aspheric lens adapters. The handles are knurled for improved grip. The hollow design allows the beam to pass through.

**SPW306:** Spanner Wrench for Ø6 mm Lens Cells

**SPW308:** Spanner Wrench for Ø8 mm Lens Cells

**SPW301:** Spanner Wrench for Ø9 mm Lens Cells

**SPW302:** Spanner Wrench for Ø12 mm Lens Cells

**SPW603:** Spanner Wrench for SM05RR Retaining Rings

**SPW602:** Spanner Wrench for SM1RR Retaining Rings

**SPW604:** Spanner Wrench for SM2RR Retaining Rings

**SPW605:** Spanner Wrench for SM3RR Retaining Rings



**SPW306**  
Spanner Wrench for  
Ø6 mm Lens Cells



**SPW308**  
Spanner Wrench for  
Ø8 mm Lens Cells



**SPW301**  
Spanner Wrench for  
Ø9 mm Lens Cells



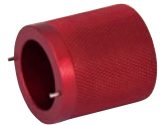
**SPW302**  
Spanner Wrench for  
Ø12 mm Lens Cells



**SPW602**  
For Ø1" Retaining Rings  
Graduated Depth Markings



**SPW604**  
For Ø2" Retaining Rings



**SPW909**  
For Ø1" Adapter  
Rings

**SPW909:**  
Use this Spanner Wrench  
with Various SM1 Adapters  
Including:

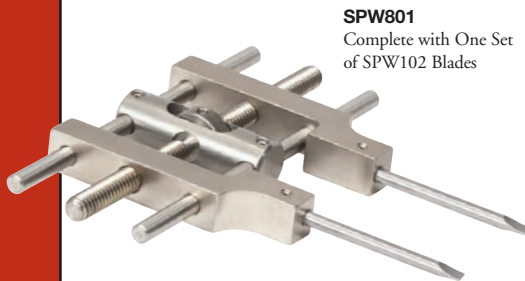
- Diode Mounts
- Fiber Adapters
- Aspheric Lens Adapters

ITEM #	\$	£	€	RMB	DESCRIPTION
SPW306	\$ 15.00	£ 10.80	€ 13,05	¥ 119.55	Spanner Wrench for Ø6 mm Lens Cells
SPW308	\$ 15.90	£ 11.45	€ 13,83	¥ 126.72	Spanner Wrench for Ø8 mm Lens Cells
SPW301	\$ 14.00	£ 10.08	€ 12,18	¥ 111.58	Spanner Wrench for Ø9 mm Lens Cells
SPW302	\$ 14.50	£ 10.44	€ 12,62	¥ 115.57	Spanner Wrench for Ø12 mm Lens Cells
SPW603	\$ 24.00	£ 17.28	€ 20,88	¥ 191.28	Spanner Wrench for SM05 Series Retaining Rings
SPW602	\$ 26.00	£ 18.72	€ 22,62	¥ 207.22	Spanner Wrench for SM1 Series Retaining Rings
SPW604	\$ 43.40	£ 31.25	€ 37,76	¥ 345.90	Spanner Wrench for SM2 Series Retaining Rings
SPW605	\$ 76.50	£ 55.08	€ 66,56	¥ 609.71	Spanner Wrench for SM3 Series Retaining Rings
SPW909	\$ 28.40	£ 20.45	€ 24,71	¥ 226.35	Spanner Wrench for SM1 Adapters

## Adjustable Spanner Wrench

This innovative design allows for one-handed adjustment of the spanner wrench blades, enabling dynamic fine-tuning of the blade separation to exactly match spacing requirements. The reversible blades contain an edge-offset fine point on one end and a flat blade on the other end.

- Spanner Adjustment Ranges from 0.12" (3.1 mm) to 3.0" (75 mm)
- One-Handed Operation Adjusts Spanning Range
- Stainless Steel Construction
- Replaceable Steel Blades



**SPW801**  
Complete with One Set  
of SPW102 Blades



**SPW102**  
Replacement Blades

ITEM #	\$	£	€	RMB	DESCRIPTION
SPW801	\$ 95.90	£ 69.05	€ 83,43	¥ 764.32	Adjustable Spanner Wrench
SPW102	\$ 27.90	£ 20.09	€ 24,27	¥ 222.36	Replacement Blade Set

## Lens Tube Strap Wrench



**LTSW**

- Use to Fasten or Loosen Lens Tubes
- Rubber Grip Handle
- Can be Adjusted to Fit All Thorlabs Lens Tube Sizes

Thorlabs' LTSW lens tube strap wrench is an ideal tool for tightening/loosening lens tubes (see pages 140 - 166) within an optics setup. The adjustable strap can accommodate objects with diameters ranging from 1/2" to 4" and provides excellent torque without marring.

ITEM #	\$	£	€	RMB	DESCRIPTION
LTSW	\$ 10.00	£ 7.20	€ 8,70	¥ 79.70	Lens Tube Strap Wrench