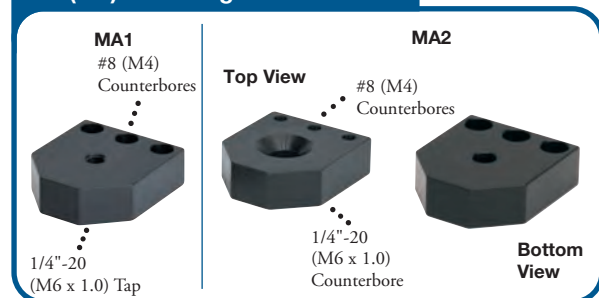
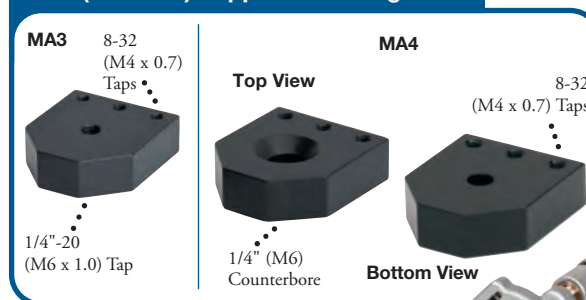


Ø1.5" Mounting Post Adapter

#8 (M4) Mounting Counterbores



8-32 (M4 x 0.7) Tapped Mounting Holes



These Mounting Post Adapters can be used to connect many of our optic mounts and translation stages to our P-Series posts. The complete set of mounting options provided by the MA Series of Adapters ensures compatibility across a wide range of optical mounts, each with its own assembly features.

POLARIS-K1 Mount
(See Page 244)

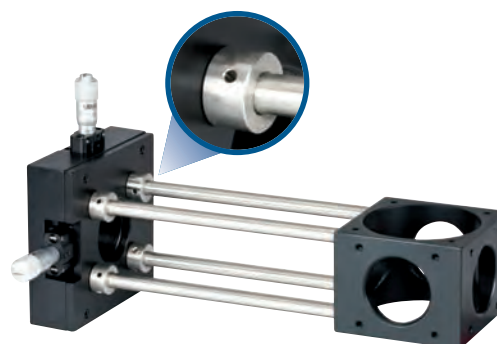
Mirror Mount and Post
Sold Separately



ITEM #	METRIC ITEM #	\$	£	€	RMB	DESCRIPTION
MA1	MA1/M	\$ 16.00	£ 11.52	€ 13.92	¥ 127.52	Mounting Adapter, 1/4"-20 (M6 x 1.0) Tap, #8 (M4) Clearance
MA2	MA2/M	\$ 16.00	£ 11.52	€ 13.92	¥ 127.52	Mounting Adapter, 1/4" (M6) Clearance, #8 (M4) Clearance
MA3	MA3/M	\$ 16.00	£ 11.52	€ 13.92	¥ 127.52	Mounting Adapter, 1/4"-20 (M6 x 1.0) Tap, 8-32 (M4 x 0.7) Tap
MA4	MA4/M	\$ 16.00	£ 11.52	€ 13.92	¥ 127.52	Mounting Adapter, 1/4" (M6) Clearance, 8-32 (M4 x 0.7) Tap

ER Rod Adapter

The ERSCA can be used to connect two internally threaded cage components with ER rods. Thread one side of the adapter into a component with 4-40 taps; then insert the cage rod into the other side and secure it with a setscrew.



- Internally Accepts Ø6 mm ER Series Rods
- 4-40 Threaded Stud
- Easily Add and Remove Components from Cage Assemblies

ERSCA



Accepts Ø6 mm
Cage Rods



4-40
External
Thread

ITEM #	\$	£	€	RMB	DESCRIPTION
ERSCA	\$ 10.80	£ 7.78	€ 9.40	¥ 86.08	ER Rod Adapter

Mechanical
Drawings Available on the
WEB

Post Cage Adapters

- Quick-Connect Cage Clamp
- Easy Drop In/Drop Out for Cage Systems
- Single Locking Screw Simplifies Positioning
- Mount 30 or 60 mm Cage Assemblies

The Post Cage Adapters were designed to mount 30 mm or 60 mm cage assemblies securely to our Ø1.0" (Ø25 mm) or Ø1.5" Series Mounting Posts. Using only a single hex wrench, the quick-connect mechanism allows for drop-in and removal of the cage assembly. A 3/16" (5 mm) hex clamping screw is located on the rear of the clamp to allow the user to easily install and remove the entire clamp from the post while keeping the cage system attached.



C1526

Post Not
Included

ITEM #	METRIC ITEM #	\$	£	€	RMB	DESCRIPTION	IMPERIAL POST	METRIC POST
C1026	C1026/M	\$ 71.00	£ 51.12	€ 61.77	¥ 565.87	30 mm Cage Clamp	Ø1.0"	Ø25 mm
C1060	C1060/M	\$ 79.00	£ 56.88	€ 68.73	¥ 629.63	60 mm Cage Clamp	Ø1.0"	Ø25 mm
C1526	C1526/M	\$ 71.00	£ 51.12	€ 61.77	¥ 565.87	30 mm Cage Clamp	Ø1.5"	Ø1.5"
C1560	C1560/M	\$ 79.00	£ 56.88	€ 68.73	¥ 629.63	60 mm Cage Clamp	Ø1.5"	Ø1.5"