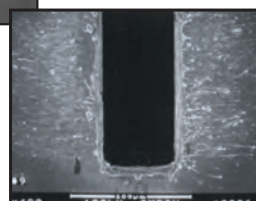


## Fixed Vertical Slits



S50R



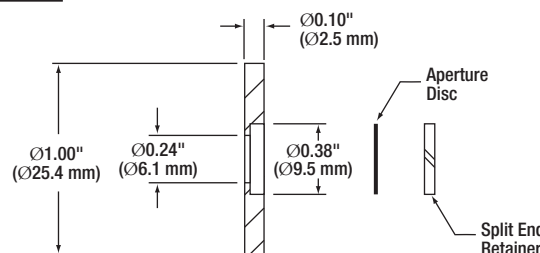
### Specifications

- **Finish:** Oxide, Dull Black (Both Sides)
- **Material:** 302 Stainless Steel, Non-Magnetic
- **Slit Thickness:** 0.0005" (12.8 µm)
- **Positional Tolerance:** Ø0.006" (0.15 mm)

These precision rectangular slits are housed in Ø1.00" (Ø25.4 mm) plates that measure 0.10" (2.5 mm) thick. They are ideal for providing a defined input aperture for an optical system. The dimensional tolerance on the actual slit width is  $\pm 1$  µm for the 5 - 15 µm slits,  $\pm 2$  µm for the 20 - 40 µm slits,  $\pm 3$  µm for the 50 µm slit, and  $\pm 4$  µm for the 100 - 200 µm slits. All slits measure 3.0 mm in height.

### Damage Threshold

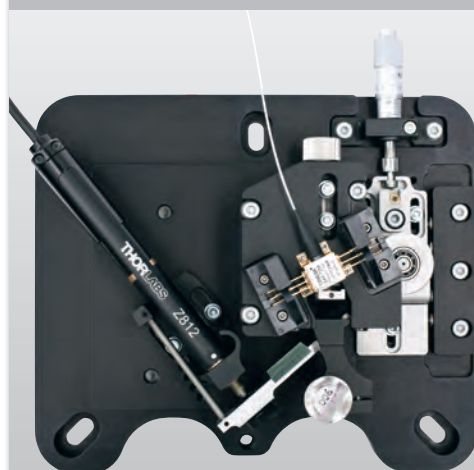
- $5 \times 10^4$  W/mm<sup>2</sup> (75 ns Pulse @ 700 nm)
- $1 \times 10^5$  W/mm<sup>2</sup> (10 ns Pulse @ 700 nm)
- $1 \times 10^3$  W/mm<sup>2</sup> (CW @ 10.6 µm)



**Mechanical**  
Drawings Available on the  
**WEB**

ITEM #	\$	£	€	RMB	DESCRIPTION
S5R	\$ 110.00	£ 79.20	€ 95.70	¥ 876.70	5 µm Wide Vertical Slit, Mounted in Ø1" Housing
S10R	\$ 100.00	£ 72.00	€ 87.00	¥ 797.00	10 µm Wide Vertical Slit, Mounted in Ø1" Housing
S15R	\$ 98.00	£ 70.56	€ 85.26	¥ 781.06	15 µm Wide Vertical Slit, Mounted in Ø1" Housing
S20R	\$ 96.00	£ 69.12	€ 83.52	¥ 765.12	20 µm Wide Vertical Slit, Mounted in Ø1" Housing
S30R	\$ 96.00	£ 69.12	€ 83.52	¥ 765.12	30 µm Wide Vertical Slit, Mounted in Ø1" Housing
S40R	\$ 91.00	£ 65.52	€ 79.17	¥ 725.27	40 µm Wide Vertical Slit, Mounted in Ø1" Housing
S50R	\$ 91.00	£ 65.52	€ 79.17	¥ 725.27	50 µm Wide Vertical Slit, Mounted in Ø1" Housing
S100R	\$ 91.00	£ 65.52	€ 79.17	¥ 725.27	100 µm Wide Vertical Slit, Mounted in Ø1" Housing
S150R	\$ 91.00	£ 65.52	€ 79.17	¥ 725.27	150 µm Wide Vertical Slit, Mounted in Ø1" Housing
S200R	\$ 91.00	£ 65.52	€ 79.17	¥ 725.27	200 µm Wide Vertical Slit, Mounted in Ø1" Housing

Have you seen our...



## Tunable Laser Kits

- ◆ Modular Design with User-Customizable Optics, Gain Chip, Tuning, etc.
- ◆ Linewidths Less than 130 kHz
- ◆ 10 dB Tuning Ranges up to 170 nm
- ◆ Laser Components Stocked to Maximize Configurability

The Tunable Laser Kit line is a rapidly growing family of tunable lasers that give users full access to the laser cavity. With unsurpassed user configurability, Tunable Laser Kits are an excellent choice for customers that need to tailor a laser to their application.

See pages 1286 - 1299