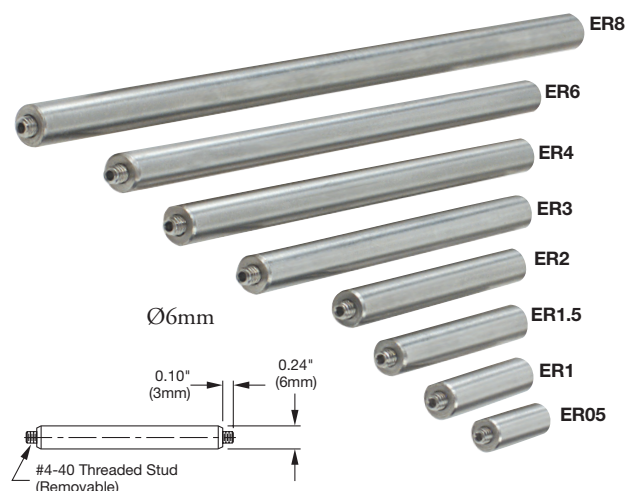


Cage Assembly Rods for 30mm Cage Systems

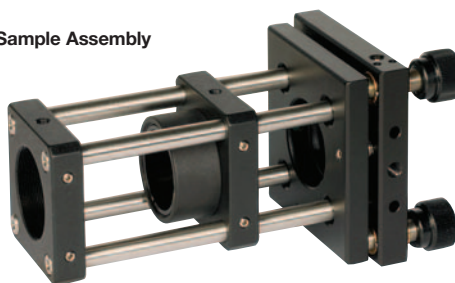
- Compatible With 30mm Cage System
- Ø6mm Precision-Ground Stainless Steel
- Stackable End-to-End Design
- Removable #4-40 Stud in Each End
- Available in Lengths Ranging From 1/2" to 8" (13mm to 203mm)

Thorlabs' Cage Assembly Systems provide a convenient way to construct large optomechanical systems with an established line of precision-machined building blocks designed for flexibility and accurate alignment. Among the most essential of these components are the cage plates and 6mm ER Series Cage Assembly Rods.



The ER Series Rods are most commonly used as precision guides for our 30mm and 60mm Cage Assembly Plates. Precision machined out of stainless steel, these rods provide excellent stability and smooth movement for any 3D cage system setup. A multitude of setups can be achieved by using these rods in conjunction with our line of swivel connectors, couplers, and right-angle rods.

Sample Assembly



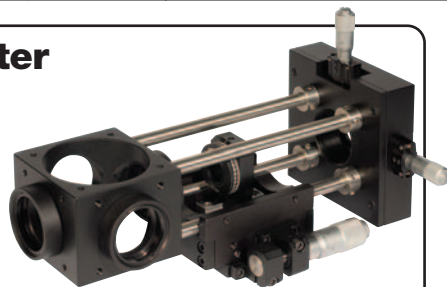
Extension rods

ITEM#	\$	£	€	RMB	DESCRIPTION
ER05†	\$ 4.94	£ 3.11	€ 4.59	¥ 47.20	Ø6mm Cage Assembly Rod, 1/2" (13mm) Long
ER1†	\$ 5.18	£ 3.26	€ 4.82	¥ 49.40	Ø6mm Cage Assembly Rod, 1" (25mm) Long
ER1.5†	\$ 5.42	£ 3.41	€ 5.04	¥ 51.70	Ø6mm Cage Assembly Rod 1.5" (38mm) Long
ER2†	\$ 5.89	£ 3.71	€ 5.48	¥ 56.20	Ø6mm Cage Assembly Rod, 2" (51mm) Long
ER3†	\$ 6.60	£ 4.20	€ 6.10	¥ 63.10	Ø6mm Cage Assembly Rod, 3" (76mm) Long
ER4†	\$ 7.08	£ 4.46	€ 6.58	¥ 67.60	Ø6mm Cage Assembly Rod, 4" (102mm) Long
ER6†	\$ 8.27	£ 5.20	€ 7.70	¥ 78.90	Ø6mm Cage Assembly Rod, 6" (152mm) Long
ER8	\$ 9.95	£ 6.27	€ 9.25	¥ 95.00	Ø6mm Cage Assembly Rod, 8" (203mm) Long

† Popular Products @ More Popular Prices

ER Rod Adapter

- Internally Accepts Ø6mm ER Series Rods
- #4-40 Threaded Stud
- Easily Add and Remove Components From Cage Assemblies



The ERSCA is an adapter with an internal bore that accepts Ø6mm ER Series rods and an external #4-40 threaded stud that can attach to ER rods or cage compatible components. The adapter will allow a cage assembly to be separated easily when adding or removing components.

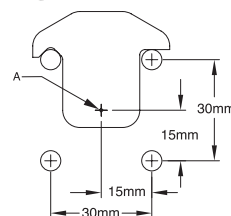
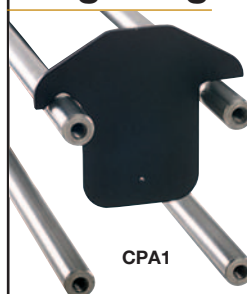
- Outer Diameter: 0.465" (12mm)
- Inner Diameter: 0.237" (6mm)



ITEM#	\$	£	€	RMB	DESCRIPTION
ERSCA	\$ 10.00	£ 6.30	€ 9.30	¥ 95.50	ER Rod Adapter

Cage Alignment Plate

- Quick Drop-In Visual Beam Alignment Tool
- Small Through-Hole Aligned at Center of 30mm Cage Assembly



The CPA1 and CPA2 alignment plates are convenient tools for aligning 30mm cage-based optical systems. These drop-in plates locate a small through-hole at the exact center of a cage assembly, providing a convenient visual beam target to assist in alignment adjustments. The CPA1 provides a Ø1mm through-hole, while the CPA2 provides a Ø5mm through-hole.

HOLE DIAMETER (A)
CPA1 = Ø1mm
CPA2 = Ø5mm

ITEM#	\$	£	€	RMB	DESCRIPTION
CPA1	\$ 9.00	£ 5.70	€ 8.40	¥ 86.00	Plate With Ø1mm Pinhole
CPA2	\$ 9.00	£ 5.70	€ 8.40	¥ 86.00	Plate With Ø5mm Pinhole

Mounting Basics

Optical Rails

Mirror Mounts

Lens Mounts

Filter Mounts

Rotation Mounts

Adapters

V-Mounts

Apertures
& Iris Diaphragms

Lens Tubes

Cage Systems

