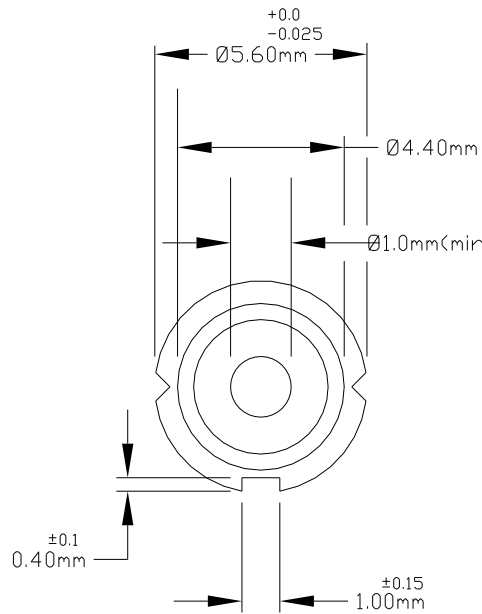
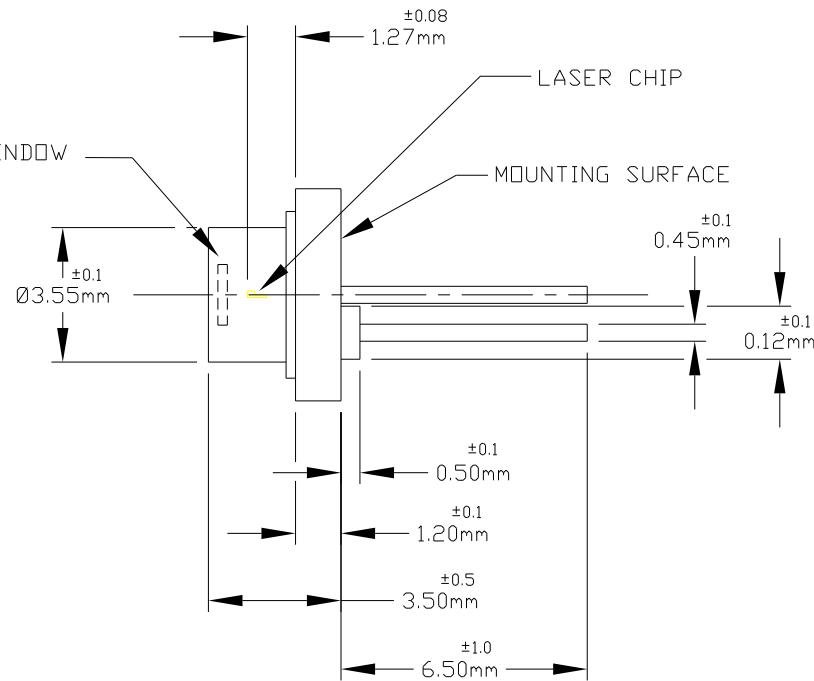


REV.#	DESCRIPTION	NAME/DATE
A	INITIAL RELEASE	EC 4/16/09

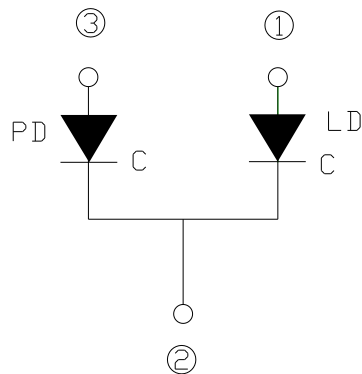
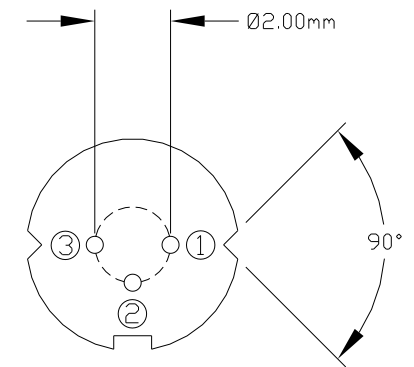
Top View



Side View



Bottom View



INTERNAL CIRCUIT
STYLE B

Model	WaveLength (nm)	Max Output (mW)	Operating Temp. °C	Case (mm)	Style
GH04020B2A	406	20	-10 to +70	5.6	B

Handling and Storage Precautions

Because of their extreme susceptibility to damage from static discharge, care should be taken whenever handling and operating laser diodes.

- Wrist Straps - Use grounded anti-static wrist straps whenever handling lasers.
 Anti-Static Mats - Always work on grounded anti-static mats.
 Storing Lasers - When not in use, short the leads of the laser together to protect against ESD.

THORLABS INC PO BOX 366
NEWTON NJ

TITLE Sharp 5.6mm LASER DIODE

TOL: XXXX=+/-0.005 XXXX=+/-0.010 ANGULAR +/--30'

SURF. FINISH: 32 MICROINCHES UNLESS OTHERWISE NOTED

DRAWN EC	ENGINEER EC	DATE OF REVIEW 4/16/2009	APPROVED RB
----------	-------------	--------------------------	-------------

MATERIAL

DATE 4/16/09	REV A	SIZE A	SHEET 1 OF 1	WHERE USED ENGINEERING SUPPORT DRAWING
DWG NO. 19614-E01	PART NO. GH04020B2A			

SCALE: 2X