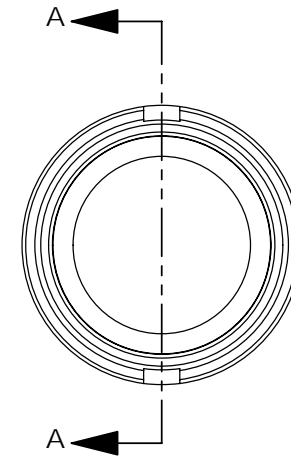
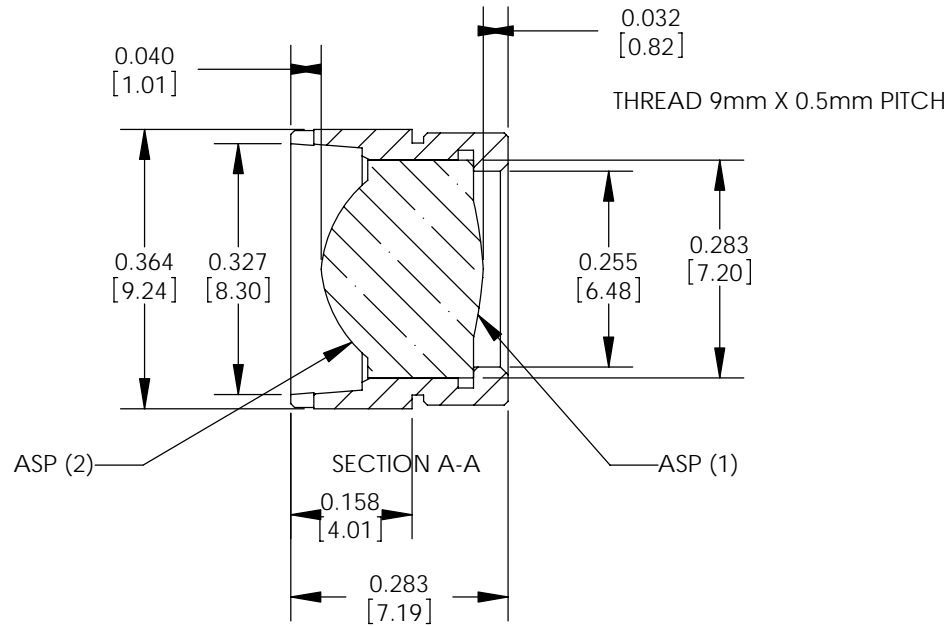




ISOMETRIC VIEW



ASPHERIC COEFFICIENTS

	R	k	A ₄	A ₆	A ₈	A ₁₀
ASP (2)	4.3283822 mm	-0.8468796	5.2151203E-04	-6.8766229E-06	-	-
ASP (1)	-14.4515771 mm	-105.2321169	-1.0593674E-03	7.692587E-05	-	-

SPECIFICATIONS:

EFFECTIVE FOCAL LENGTH = 6.24 mm
 NUMERICAL APERTURE = 0.40
 CLEAR APERTURE = 5.00 mm
 WORKING DISTANCE = 3.39 mm
 DESIGN WAVELENGTH = 780nm
 COATING = 600-1050nm
 SCRATCH-DIG = 40-20

DIMENSIONS IN
 in
 [mm]

THIS DRAWING IS FOR INFORMATION ONLY
 NOT INTENDED FOR MANUFACTURING

THORLABS INC. PO BOX 366
 NEWTON NJ

TITLE: B COATED MOUNTED ASPHERIC
 LENS f = 6.24 mm NA = 0.40

MATERIAL: 303 STAINLESS STEEL AND ECO550 GLASS | SIZE A | REV. C

SCALE: 4:1 | SHEET 1 OF 1

DWG. NO. 13719-E01 | PART NO. C110TME-B

	NAME	DATE
DRAWN	DP	01/10/2008
ENG APPR.	DJ	04/30/2009
MFG APPR.	DD	05/06/2009

PROPRIETARY AND CONFIDENTIAL
 THE INFORMATION CONTAINED IN THIS
 DRAWING IS THE SOLE PROPERTY OF
 THORLABS, INC. ANY REPRODUCTION
 IN PART OR AS A WHOLE WITHOUT
 THE WRITTEN PERMISSION OF
 THORLABS, INC. IS PROHIBITED.