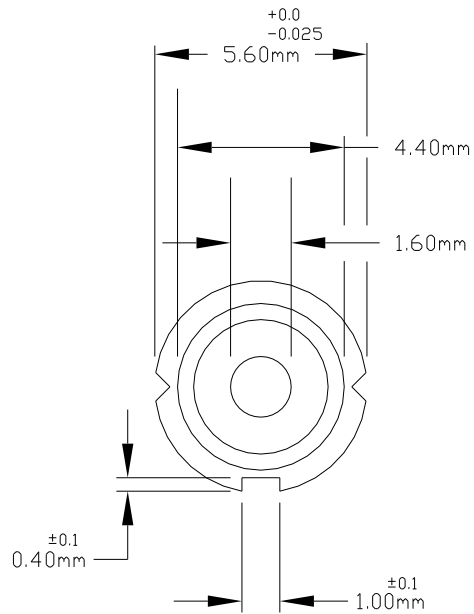
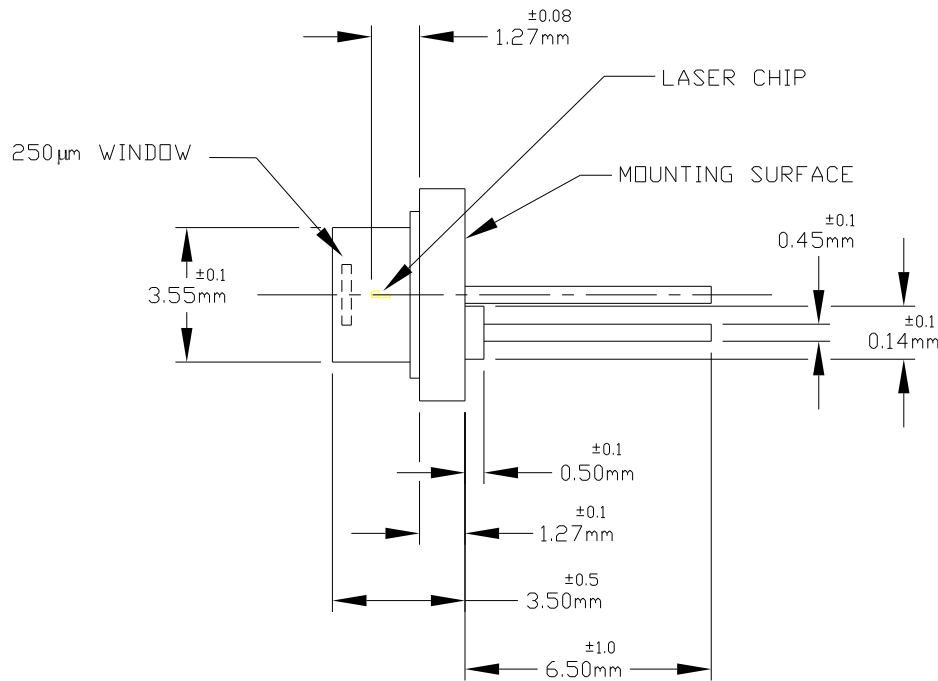


REV.#	DESCRIPTION	NAME/DATE
A	INITIAL RELEASE	JCB 12/8/08

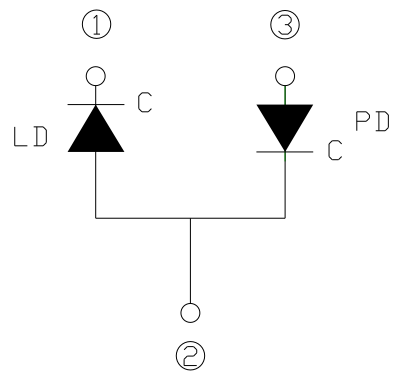
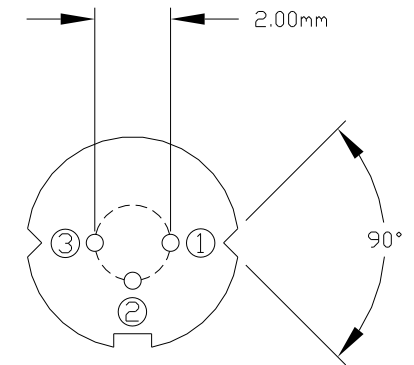
Top View



Side View



Bottom View



INTERNAL CIRCUIT
STYLE A

Model	WaveLength (nm)	Max Output (mW)	Operating Temp. °C	Case (mm)	Style
L850P010	850	10	-10 to +50	5.6	A

Handling and Storage Precautions

Because of their extreme susceptibility to damage from static discharge, care should be taken whenever handling and operating laser diodes.

- Wrist Straps - Use grounded anti-static wrist straps whenever handling lasers.
 Anti-Static Mats - Always work on grounded anti-static mats.
 Storing Lasers - When not in use, short the leads of the laser together to protect against ESD.

THORLABS INC				PO BOX 366 NEWTON NJ	
TITLE ADI 5.6mm LASER DIODE					
TOL: XXX=+/-0.005 XXX=+/-0.010 ANGULAR +/--30'					
SURF. FINISH: 32 MICROINCHES UNLESS OTHERWISE NOTED					
DRAWN JCB	ENGINEER JCB	DATE OF REVIEW 12/8/2008	APPROVED RB		
MATERIAL					
DATE 012/8/08	REV A	SIZE A	SHEET 1 OF 1	WHERE USED ENGINEERING SUPPORT DRAWING	
DWG NO. 11910-E01	PART NO. L850P010				

SCALE: 2X