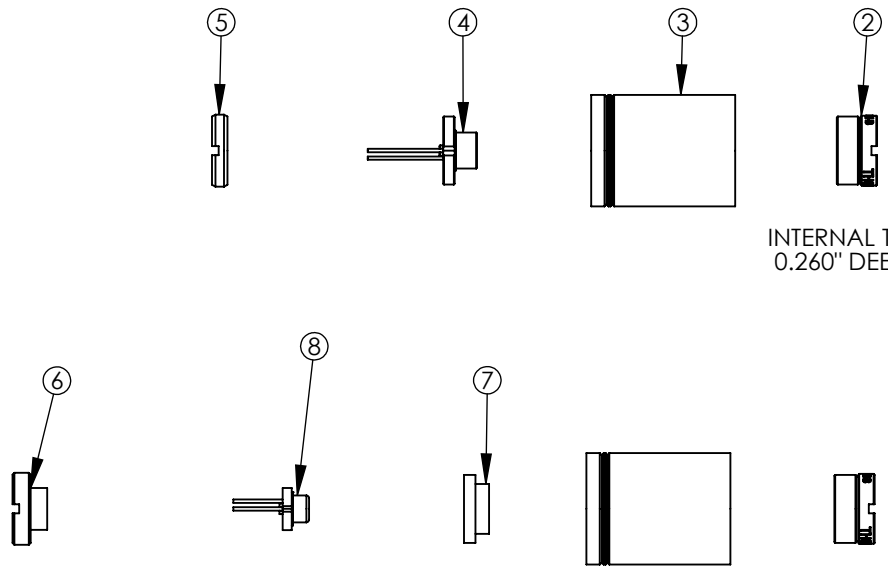
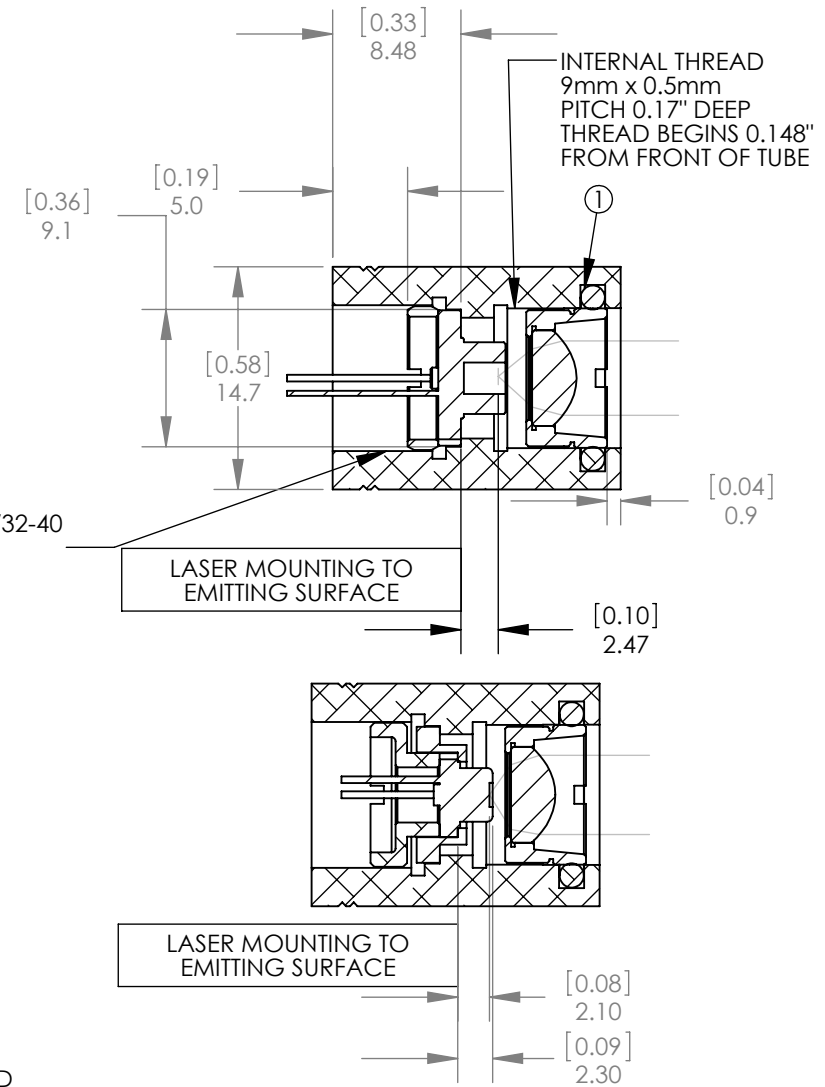


NUMBER	PART	MATERIAL
①	O-RING (PROVIDES FRICTION FIT)	RUBBER
②	f=4.51mm NA=0.54 AR 650-1050nm MOUNTED ASPHERIC LENS	-
③	COLLIMATION TUBE	6061-T6 ALUMINUM
④	9.0mm LASER DIODE (SOLD SEPARATELY)	-
⑤	RETAINING RING FOR 9.0mm DIODE	6061-T6 ALUMINUM
⑥	RETAINING RING FOR 5.6mm DIODE	6061-T6 ALUMINUM
⑦	ADAPTER FOR 5.6mm DIODE	6061-T6 ALUMINUM
⑧	5.6mm LASER DIODE (SOLD SEPARATELY)	-



INTERNAL THREAD 13/32-40
0.260" DEEP



- LENS CELL HAS $\pm 1.0\text{mm}$ ADJUSTMENT RANGE FROM POSITION SHOWN, WHICH WAS DESIGNED FOR TOSHIBA STANDARD 9mm LASER PACKAGE
- LT110A DESIGN REQUIRES THE EMITTING SURFACE OF THE LASER TO BE BETWEEN 1.7-3.2mm FROM THE $\phi 9\text{mm}$ MOUNTING FLANGE OF THE LASER
- USE THORLABS SPANNER WRENCH SPW301 FOR RETAINING RINGS, AS WELL AS LENS
- PRINCIPLE PLANE OF LENS IS NOMINALLY 8.7mm FROM LASER MOUNTING SURFACE

ALL DIMENSIONS ARE IN $\frac{[in]}{mm}$
THIS DRAWING IS FOR INFORMATION ONLY
NOT INTENDED FOR MANUFACTURING

THORLABS INC. PO BOX 366
NEWTON NJ

	NAME	DATE
DRAWN	MG	03/09/2010
ENG APPR.	WD	04/18/2011
MFG APPR.	DD	04/20/2011

PROPRIETARY AND CONFIDENTIAL
THE INFORMATION CONTAINED IN THIS DRAWING IS THE SOLE PROPERTY OF THORLABS, INC. ANY REPRODUCTION IN PART OR AS A WHOLE WITHOUT THE WRITTEN PERMISSION OF THORLABS, INC. IS PROHIBITED.

TITLE: LT230P-B COLLIMATION TUBE		SIZE A	REV. D
MATERIAL: SEE TABLE			
SCALE: 2:1		SHEET 1 OF 1	
DWG. NO. 0897-E01	PART NO. LT230P-B		